



City Commission
Study Session Agenda
Monday, November 27, 2017 at 2:00pm
Shelton Civic Center

A. Call to Order

B. Commission Reports

- Employee of the Month

C. General Public Comment (3-minute time limit per person)

The City Commission invites members of the public to provide comment on any topic at this time. City Commissioners and City Staff will not enter into a dialogue during public comment. If the Commission feels an issue requires follow up, staff will be directed to respond at an appropriate time.

D. Business Agenda

1. Resolution No. 1110-1117 - A Resolution of the City of Shelton, Washington Declaring City Vehicles Surplus to the Needs of the City, and Disposing of Such Vehicles for the Common Benefit – Presented by Police Chief Darrin Moody (Tab 1)
2. Ordinance No. 1910-1217 – First Reading – An Ordinance of the City of Shelton, Washington, Amending Chapter 15.28 of the Shelton Municipal Code Relating to Water Rates – Presented by Public Works Director Craig Gregory (Tab 2)
3. Ordinance No. 1911-1217 – First Reading – An Ordinance of the City of Shelton, Washington, Relating to Sewer Service; Amending Shelton Municipal Code Sections 14.28.010 through 14.28.040 – Presented by Public Works Director Craig Gregory (Tab 3)
4. Resolution No. 1112-1217 – A Resolution of the City of Shelton, Washington, Approving Composition of the Mason Transit Authority Board – Presented by City Clerk Jamie Ogg (Tab 4)

E. Administration Reports

1. Department Updates
 - Police Department Update by Police Chief Darrin Moody
 - Fire Department Update by Fire Chief Tim McKern (Tab 5)
 - Courts Update by Court Administrator Dyan Smolinsky
 - Community Development Update by Community Development Director Mark Ziegler
2. City Manager Report
 - Shelton City Council Update
 - Dye Test Update (Tab 6)

F. Announcement of Next Meeting – December 4, 2017 at 6 p.m.

G. Adjourn



Looking Ahead

Meeting Date	Agenda Items
SMPD Monday, December 4 6:00 pm	<u>Public Hearing</u> <ul style="list-style-type: none"> 2018 SMPD Budget: Final Budget Hearing-Resolution adopting the 2018 SMPD Budget Possible Adoption of the SMPD Budget <u>Business Agenda</u> <ul style="list-style-type: none">
Monday, December 4 Immediately following the SMPD meeting	<u>Public Hearing</u> <ul style="list-style-type: none"> 2018 Final Budget Hearing – First Opportunity to adopt- Ordinance No. XXXX-XXXX adopting 2018 Final Budget <u>Action Agenda</u> <ul style="list-style-type: none"> 2017 Budget Amendment Resolution No. 1110-1117 – First and Final Reading - Surplus of Police Department Vehicles Ordinance No. 1910-1217 – Second Reading - Relating to water service rates; amending Shelton Municipal Code 15.28. Ordinance No. 1911-1217 - Second Reading - Relating to sewer service; amending Shelton municipal code sections 14.28.010 through 14.28.040. Resolution No. 1112-1217 – First and Final Reading – Approving Composition of the Mason Transit Authority Board Resolution No. 1111-1117 - Adoption of Fee Schedule
Monday, December 11 2:00 pm	<u>Business Agenda</u> <ul style="list-style-type: none"> Front Street Pump Repairs 3 and 4 Legislative Agenda Comprehensive Plan Update – Mark Ziegler <u>Action Agenda</u> <ul style="list-style-type: none"> Resolution calling for election of City Council <u>Department Updates</u> <ul style="list-style-type: none"> Admin, Finance, Public Works
SMPD Monday, December 18 6:00 p.m.	<u>Action Agenda</u> <ul style="list-style-type: none"> Adopt SMPD 2018 Budget – Possibly remove if adopted on 12/4
Monday, December 18 Immediately following the SMPD meeting	<u>Public Hearing</u> <ul style="list-style-type: none"> Comprehensive Plan – Mark Ziegler <u>Action Agenda</u> <ul style="list-style-type: none"> Adopt 2018 budget – Final opportunity to adopt Legislative Agenda Front Street Pump Repairs 3 and 4 Comprehensive Plan Public hearing – First reading



Looking Ahead

Tuesday, December 26 2:00 pm	<u>Commission Reports</u> <ul style="list-style-type: none">• Employee of the Month <u>Business Agenda</u> <ul style="list-style-type: none">• "C" Street Consent Decree <u>Department Updates</u> <ul style="list-style-type: none">• Police, Fire, Courts, Community Development
---------------------------------	--



**CITY OF SHELTON
COMMISSION BRIEFING REQUEST
(Please Use Bolded Information Inserts)**

Touch Date: 11/20/17
Brief Date: 11/27/17
Action Date: 12/04/17

Department: Police Department
Presented By: Darrin Moody

**APPROVED FOR COMMISSION
PACKET:**

Action Requested:

ROUTE TO:

REVIEWED:

PROGRAM/PROJECT TITLE:

Vehicle Surplus

☐

Ordinance

☒ Dept. Head

☒

Resolution

☐ Finance Director

ATTACHMENTS:

**Resolution No. 1110-1117
Exhibit A**

☐

Motion

☐ Attorney

☒

Other

☐ City Clerk

☐ City Manager

DESCRIPTION OF THE PROGRAM/PROJECT AND BACKGROUND INFORMATION:

The Shelton Police Department requests the surplus of the following vehicle:

2003 Ford Crown Victoria (City #9624) – Costly repairs, no Residual Value; all usable equipment has been removed, proposed disposal per resolution.

2003 Ford Crown Victoria (City #9686) – Costly repairs, no Residual Value; all usable equipment has been removed, proposed disposal per resolution.

ANALYSIS/OPTIONS/ALTERNATIVES:

BUDGET/FISCAL INFORMATION:

Request that proceeds from the sale of this vehicle be used to offset costs of Police Department vehicles to include repair/maintenance of existing vehicles and/or purchase of a vehicle.

PUBLIC INFORMATION REQUIREMENTS:

STAFF RECOMMENDATION/MOTION:

Staff requests Commission concur to place Resolution No. 1110-1117 on the Action Agenda of December 4, 2017.

RESOLUTION NO. 1110-1117

**A RESOLUTION OF THE CITY OF SHELTON, WASHINGTON DECLARING CITY
VEHICLES SURPLUS TO THE NEEDS OF THE CITY, AND DISPOSING OF SUCH
VEHICLES FOR THE COMMON BENEFIT.**

WHEREAS, RCW 35A11.010 and 35A.79.010 allow a municipal code city to dispose of property for the common benefits; and

WHEREAS, the City owns property that is no longer needed in order to perform the business of the Police Department;

NOW, THEREFORE BE IT RESOLVED, by the City Commission of the City of Shelton, Washington, as follows:

Section 1.

1. All property of the City of Shelton Police Department shown on Exhibit "A", attached, is hereby declared surplus to the needs of the City.
2. Disposal of property on Exhibit "A" is declared to be for the common benefit.
3. Disposal of the property herein declared surplus will be disposed of in a manner provided by law.

INTRODUCED on the 27th Day of November, 2017

PASSED by the City Commission of the City of Shelton on this ____ day of _____, 20____.

ATTEST:

Mayor Gary H. Cronic

City Clerk Ogg

Commissioner Kathy McDowell

Commissioner Tracy Moore

Exhibit “A” for Resolution No. 1110-1117

City Asset #	Description	License #	Value
9624	2003 Ford Crown Victoria	19934D	Fully depreciated
9686	2003 Ford Crown Victoria	19966D	Fully depreciated



**CITY OF SHELTON
COMMISSION BRIEFING REQUEST
(Please Use Bolded Information Inserts)**

Touch Date: 11/20/17
Brief Date: 11/27/17
Action Date: 12/4/17

Department: Public Works
Presented By: **Craig Gregory**

**APPROVED FOR COMMISSION
PACKET:**

Action Requested:

ROUTE TO:

REVIEWED:

PROGRAM/PROJECT TITLE:

- ☒ Dept. Head _____
☒ Finance Director _____
☒ Attorney _____
☒ City Clerk _____
☐ City Manager _____

**Water Rates and Charges
Ordinance**

ATTACHMENTS:

Ordinance 1910-1217

- ☒ Ordinance
☐ Resolution
☐ Motion
☒ Other

DESCRIPTION OF THE PROGRAM/PROJECT AND BACKGROUND INFORMATION:

This Ordinance updates the Shelton Municipal Code (SMC) covering sewer rates and charges under SMC, Chapter 15.28, entitled Water Service-Rates and Charges. This Ordinance is necessary to ensure that water rates and charges are maintained to provide the essential revenue to support the operations, debt service, and capital projects anticipated in future years.

A professionally- conducted rate study update was completed in October 2017 and the City Commission has reviewed public comment on the proposed rate adjustments and considered the recommendations of both staff and public.

The proposed rate adjustment has been calculated as follows:

An annual 10% increase adjustment for 2018, 2019, 2020, 2021, then an annual rate increase adjustment of 3% for each year 2022 and 2023, starting the January billing cycle.

ANALYSIS/OPTIONS/ALTERNATIVES:

N/A

BUDGET/FISCAL INFORMATION:

As contained and explained herein.

PUBLIC INFORMATION REQUIREMENTS:

A Public Hearing was not required by RCW but Public Works held said hearing before the City Commissioners on October 23, 2017.

STAFF RECOMMENDATION/MOTION:

City staff recommends that the commission concur to have a first reading of Ordinance No. 1910-1217 and place it on the action agenda for December 4th, 2017.

ORDINANCE NO. 1910-1217

AN ORDINANCE OF THE CITY OF SHELTON, WASHINGTON, AMENDING CHAPTER 15.28 OF THE SHELTON MUNICIPAL CODE RELATING TO WATER RATES.

WHEREAS, the City Commission desires to update Chapter 15.28, entitled Water Service – Rates and Charges, of the Shelton Municipal Code; and

WHEREAS, following the review of the conclusion of a professionally-conducted rate study conducted by the FCS Group in 2017 and the current status of the water utility, the City Commission finds it necessary to update water utility rates and charges to provide revenue essential to support the water utility's operations, debt service and capital projects anticipated in future years; and

WHEREAS, the City Commission has reviewed public comment on the proposed rate adjustments and considered the recommendations of both staff and the public; and

WHEREAS, that adjustment has been calculated as follows:

An annual ten percent (10%) increase from the prior year's base water rate each year for 2018, 2019, 2020 and 2021, then an annual three percent (3%) rate increase from the prior year's base water rate each year 2022 and 2023, effective in the January billing cycle for each year; and

WHEREAS, the City Commission finds it appropriate to begin these annual rate adjustments using the current water rate and increasing it each year by the above stated percentages,

NOW THEREFORE, be it ordained by the City Commission of the City of Shelton, Washington:

Section 1. Sections 15.28.020 through 15.28.065 are hereby replaced in their entirety with the following:

15.28.020 Schedule 1: Meter charge.

A. Meter Charge. Each account that is served shall pay a monthly water meter charge in each of the following years as follows:

2018:

Meter Size	Single- family	Multi-family	Commercial	Irrigation	Private fire line*
3/4 inch	\$12.12	\$10.69	\$10.33	\$32.04	\$7.76
1 inch	\$15.75	\$13.35	\$12.76	\$49.02	\$9.27
1 1/4 inch	\$19.57	\$15.97	\$15.09	\$69.39	\$10.60
1 1/2 inch	\$23.41	\$18.60	\$17.40	\$89.73	\$11.95
2 inch	\$35.02	\$27.36	\$25.44	\$141.19	\$17.13
2 1/2 inch	N/A	N/A	N/A	N/A	\$31.12
3 inch	\$86.28	\$70.90	\$67.09	\$298.79	\$47.49
4 inch	\$120.00	\$95.96	\$89.98	\$452.01	\$62.08
6 inch	\$208.40	\$160.34	\$148.39	\$872.22	\$98.32
8 inch	\$312.91	\$236.04	\$216.92	\$1,375.10	\$140.62
10 inch	\$470.69	\$360.18	\$332.70	\$1,997.75	\$219.19

2019:

Meter Size	Single- family	Multi-family	Commercial	Irrigation	Private fire line*
3/4 inch	\$13.33	\$11.76	\$11.36	\$35.25	\$8.53
1 inch	\$17.33	\$14.69	\$14.04	\$53.92	\$10.20
1 1/4 inch	\$21.53	\$17.57	\$16.60	\$76.33	\$11.66
1 1/2 inch	\$25.75	\$20.46	\$19.14	\$98.70	\$13.14
2 inch	\$38.53	\$30.09	\$27.99	\$155.30	\$18.84
2 1/2 inch	N/A	N/A	N/A	N/A	\$34.23
3 inch	\$94.91	\$77.98	\$73.80	\$328.67	\$52.24
4 inch	\$132.00	\$105.56	\$98.98	\$497.21	\$68.29
6 inch	\$229.23	\$176.37	\$163.23	\$959.45	\$108.15
8 inch	\$344.20	\$259.64	\$238.61	\$1,512.61	\$154.69
10 inch	\$517.76	\$396.20	\$365.96	\$2,197.53	\$241.10

2020:

Meter Size	Single- family	Multi-family	Commercial	Irrigation	Private fire line*
3/4 inch	\$14.67	\$12.94	\$12.50	\$38.77	\$9.38
1 inch	\$19.06	\$16.16	\$15.44	\$59.31	\$11.22
1 1/4 inch	\$23.68	\$19.33	\$18.26	\$83.96	\$12.83
1 1/2 inch	\$28.32	\$22.51	\$21.06	\$108.57	\$14.45
2 inch	\$42.38	\$33.10	\$30.79	\$170.83	\$20.72
2 1/2 inch	N/A	N/A	N/A	N/A	\$37.65
3 inch	\$104.40	\$85.78	\$81.18	\$361.54	\$57.46
4 inch	\$145.20	\$116.12	\$108.88	\$546.93	\$75.12
6 inch	\$252.16	\$194.01	\$179.55	\$1,055.39	\$118.96
8 inch	\$378.62	\$285.61	\$262.47	\$1,663.87	\$170.16
10 inch	\$569.53	\$435.82	\$402.56	\$2,417.28	\$265.22

2021:

Meter Size	Single- family	Multi-family	Commercial	Irrigation	Private fire line*
3/4 inch	\$16.13	\$14.23	\$13.75	\$42.65	\$10.32
1 inch	\$20.97	\$17.77	\$16.98	\$65.24	\$12.34
1 1/4 inch	\$26.05	\$21.26	\$20.09	\$92.36	\$14.11
1 1/2 inch	\$31.16	\$24.76	\$23.16	\$119.43	\$15.90
2 inch	\$46.62	\$36.41	\$33.86	\$187.92	\$22.80
2 1/2 inch	N/A	N/A	N/A	N/A	\$41.42
3 inch	\$114.84	\$94.36	\$89.30	\$397.69	\$63.21
4 inch	\$159.72	\$127.73	\$119.76	\$601.63	\$82.63
6 inch	\$277.37	\$213.41	\$197.51	\$1,160.93	\$130.86
8 inch	\$416.48	\$314.17	\$288.72	\$1,830.26	\$187.17
10 inch	\$626.49	\$479.40	\$442.82	\$2,659.01	\$291.74

2022:

Meter Size	Single- family	Multi-family	Commercial	irrigation	Private fire line*
3/4 inch	\$16.62	\$14.66	\$14.16	\$43.93	\$10.63
1 inch	\$21.59	\$18.31	\$17.49	\$67.20	\$12.71
1 1/4 inch	\$26.83	\$21.90	\$20.69	\$95.13	\$14.54
1 1/2 inch	\$32.09	\$25.50	\$23.86	\$123.01	\$16.38
2 inch	\$48.02	\$37.50	\$34.88	\$193.55	\$23.48
2 1/2 inch	N/A	N/A	N/A	N/A	\$42.66
3 inch	\$118.29	\$97.19	\$91.97	\$409.62	\$65.10
4 inch	\$164.51	\$131.56	\$123.36	\$619.68	\$85.11
6 inch	\$285.69	\$219.81	\$203.43	\$1,195.76	\$134.79
8 inch	\$428.97	\$323.59	\$297.38	\$1,885.16	\$192.79
10 inch	\$645.28	\$493.79	\$456.10	\$2,738.78	\$300.49

2023:

Meter Size	Single- family	Multi-family	Commercial	Irrigation	Private fire line*
3/4 inch	\$17.12	\$15.10	\$14.59	\$45.25	\$10.95
1 inch	\$22.24	\$18.86	\$18.02	\$69.21	\$13.09
1 1/4 inch	\$27.63	\$22.55	\$21.31	\$97.98	\$14.97
1 1/2 inch	\$33.05	\$26.27	\$24.57	\$126.70	\$16.87
2 inch	\$49.46	\$38.63	\$35.93	\$199.36	\$24.18
2 1/2 inch	N/A	N/A	N/A	N/A	\$43.94
3 inch	\$121.84	\$100.11	\$94.73	\$421.91	\$67.05
4 inch	\$169.45	\$135.51	\$127.06	\$638.27	\$87.67
6 inch	\$294.27	\$226.40	\$209.54	\$1,231.63	\$138.83
8 inch	\$441.84	\$333.30	\$306.30	\$1,941.72	\$198.57
10 inch	\$664.64	\$508.60	\$469.78	\$2,820.94	\$309.50

*Private fire lines will be rated based on the size of the backflow prevention device in lieu of a meter size and fire line charges will be collected only prospectively beginning with the January 2018 billings.

15.28.030 Schedule 2: Single-family residential.

A. Consumption Charge for first Six Hundred Cubic Feet. In addition to the meter charge established in Schedule 1 above, each single-family residential unit shall pay the following rate for each cubic foot of water consumed up to the first six hundred cubic feet in a month in each of the following years:

2018	2019	2020	2021	2022	2023
\$0.0253	\$0.0278	\$0.0306	\$0.0337	\$0.0347	\$0.0357

B. Consumption Charge for Amounts in Excess of Six Hundred and up to Fifteen Hundred Cubic Feet. In addition to the meter charge established in Schedule 1 above, and the charge established in Schedule 2.A above, each single-family residential unit shall also pay the following rate for each cubic foot consumed in a month in excess of six hundred cubic feet up to fifteen hundred cubic feet in each of the following years:

2018	2019	2020	2021	2022	2023
\$0.0305	\$0.0335	\$0.0369	\$0.0406	\$0.0418	\$0.0430

C. Consumption Charge for Amounts in Excess of Fifteen Hundred Cubic Feet. In addition to the meter charge established in Schedule 1 above, the charge established in Schedule 2.A above, and the charge established in Schedule 2.B above, each single-family residential unit shall also pay the following rate for each cubic foot consumed in a month in excess of fifteen hundred cubic feet in each of the following years:

2018	2019	2020	2021	2022	2023
\$0.0377	\$0.0415	\$0.0457	\$0.0502	\$0.0517	\$0.0533

D. Senior Citizen and Disability Discounts. Eligible low-income senior citizens and disabled persons living in single-family residences shall receive a discount of seventeen percent of the basic meter charge per month as established in Schedule 1 above. Eligibility shall be determined according to criteria established by the City in the City's sole discretion.

15.28.040 Schedule 3: Multifamily (including duplexes, triplexes, mobile home and trailer parks).

A. Multifamily Consumption Charge.

1. In addition to the charges established in Schedule 1 above, each account shall pay the following rate for each cubic foot consumed in a month in each of the following years:

2018	2019	2020	2021	2022	2023
\$0.0295	\$0.0324	\$0.0357	\$0.0392	\$0.0404	\$0.0416

15.28.050 Schedule 4: Commercial (including government, industrial, hotel/motel).

A. Commercial Consumption Charge. In addition to the meter charge established in Schedule 1 above, each commercial account shall pay the following amount for each cubic foot consumed in a month in each of the following years:

2018	2019	2020	2021	2022	2023
\$0.0290	\$0.0319	\$0.0351	\$0.0387	\$0.0398	\$0.0410

B. The following provisions shall apply to Industrial Services, as defined in SMC 15.04.160, located in the city or in any outlying area where industrial accounts are served by the city:

1. All costs incurred in connection and installation of meters and service connections will be borne by the Industrial Services user;
2. Any water supplied to an Industrial Services user is subject to immediate deactivation when it is determined by the director that an emergency warrants this action;
3. The rate to be charged Industrial Services shall be computed on a monthly basis consistent with the commercial rates established above.

15.28.060 Schedule 5: Irrigation.

A. Irrigation Consumption Charge. In addition to the meter charge established in Schedule 1 above, each irrigation account shall pay the following amount for each cubic foot consumed in a month in each of the following years:

2018	2019	2020	2021	2022	2023
\$0.0342	\$0.0376	\$0.0414	\$0.0455	\$0.0469	\$0.0483

15.28.065 Schedule 6: Wholesale Rate.

A. Wholesale Consumption Rate Charge. In addition to the meter charge established in Schedule 1 above, the Johns Prairie area owned by the Port of Shelton shall pay the following amount for each cubic foot consumed in a month in each of the following years:

2018	2019	2020	2021	2022	2023
\$0.0238	\$0.0261	\$0.0287	\$0.0316	\$0.0326	\$0.0336

Section2. Severability. If any section, subsection, paragraph, sentence, clause or phrase of this ordinance is declared unconstitutional or invalid for any reason, such invalidity shall not affect the validity or effectiveness of the remaining portions of this ordinance.

Section3. Savings Clause. Chapter 15.28 of the Shelton Municipal Code shall remain in full force and effect until such date as this ordinance becomes effective.

Section 4. Effective Date. This Ordinance shall take effect 30 days after its passage and publication. The rates and charges provided for in this Ordinance shall be effective as a part of the January 2018 utility billings.

INTRODUCED the 27th day of November 2017.

ADOPTED by the City Commission of the City of Shelton, Mason County, Washington at a regular open public meeting held the ____ day of December 2017, the following Commissioners being present and voting in favor of this ordinance.

ATTEST:

Mayor Cronic

City Clerk Ogg

Commissioner McDowell

Commissioner Moore



**CITY OF SHELTON
COMMISSION BRIEFING REQUEST
(Please Use Bolded Information Inserts)**

Touch Date: 11/20/17
Brief Date: 11/27/17
Action Date: 12/4/17
First Reading of Ordinance

Department: Public Works
Presented By: **Craig Gregory**

**APPROVED FOR COMMISSION
PACKET:**

Action Requested:

ROUTE TO:

REVIEWED:

PROGRAM/PROJECT TITLE:

- ☒ Dept. Head _____
☒ Finance Director _____
☒ Attorney _____
☒ City Clerk _____
☐ City Manager _____

**Sewer Rates and Charges
Ordinance**

ATTACHMENTS:

Ordinance 1911-1217

- ☒ Ordinance
☐ Resolution
☐ Motion
☒ Other

DESCRIPTION OF THE PROGRAM/PROJECT AND BACKGROUND INFORMATION:

This Ordinance updates the Shelton Municipal Code (SMC) covering sewer rates and charges under SMC, Title 14, Chapter 14.28, entitled Sewer Service-Rates and Charges. This Ordinance is necessary to ensure that sanitary sewer rates and charges are maintained to provide the essential revenue to support the operations, debt service, and capital projects of the sewer utility.

A professionally- conducted rate study update was completed in October 2017 and the City Commission has reviewed public comment on the proposed rate adjustments and considered the recommendations of both staff and public.

The proposed rate adjustment has been calculated as follows:

A 0% increase for 2018, then an annual rate increase adjustment of 4% for each year 2019, 2020, 2021, 2022 and 2023, starting the January billing cycle.

ANALYSIS/OPTIONS/ALTERNATIVES:

N/A

BUDGET/FISCAL INFORMATION:

As contained and explained herein.

PUBLIC INFORMATION REQUIREMENTS:

A Public Hearing was not required by RCW but Public Works held said hearing before the City Commissioners on October 23, 2017.

STAFF RECOMMENDATION/MOTION:

City staff recommends that the Commission concur to have a first reading of Ordinance No. 1911-1217 and place it on the action agenda for December 4th, 2017.

ORDINANCE NO. 1911-1217

AN ORDINANCE OF THE CITY OF SHELTON, WASHINGTON, RELATING TO SEWER SERVICE; AMENDING SHELTON MUNICIPAL CODE SECTIONS 14.28.010 THROUGH 14.28.040.

WHEREAS, the City Commission desires to update Title 14, Chapter 14.28, entitled Sewer Service-Rates and Charges, of the Shelton Municipal Code; and

WHEREAS, following the review of the conclusion of a professionally-conducted rate study update conducted by the FCS Group in 2017 and the current status of the sewer utility, the City Commission finds it necessary to update sewer utility rates and charges to provide revenue essential to support the sewer utility's operations, debt service and capital projects anticipated in future years; and

WHEREAS, the City Commission has reviewed public comment on the proposed rate adjustments and considered the recommendations of both staff and public; and

WHEREAS, that adjustment has been calculated as follows:

A 0% increase for 2018, such that the 2017 base sewer rate shall remain effective throughout 2018, then an annual four percent (4%) rate increase from the prior year's base sewer rate for each year 2019, 2020, 2021, 2022 and 2023, effective in the January billing cycle for each year; and

WHEREAS, the City Commission finds it appropriate to begin these annual rate adjustments using the current sewer rate and increasing it each year by the above stated percentages,

NOW THEREFORE, be it ordained by the City Commission of the City of Shelton, Washington:

Chapter 14.28 entitled "Sewer Service – Rates and Charges", and the corresponding sections of Shelton Ordinances 1881-0116 § 3 (part), 1793-1011, 1755-1109, 1735-1008, 1686-1106, 1673-0206, 1671-0206, 1662-1205, 1632-0904, 1610-0104, 1605-1103, 1602-1003, 1585-0303, 1583-0103, 1824-0313, and 1838-1113 are hereby amended to read as follows:

Chapter 14.28
SEWER SERVICE – RATES AND CHARGES

Section 1.

14.28.010 Monthly sewer rates.

The following rates shall be charged by the City for furnishing sewer service. All rates and charges herein shall become effective with the January billings of the affected year.

14.28.020 Schedule 1: Single-family residential and duplex

A. Basic Charge. Each meter that is served, whether for a single-family residence or duplex, shall pay a monthly basic charge in each of the following years as follows:

2018	2019	2020	2021	2022	2023
\$46.73	\$48.60	\$50.54	\$52.56	\$54.67	\$56.85

B. Consumption Charge. In addition to the basic charge, each single-family residence or duplex account shall pay a consumption charge for each cubic foot of water consumed in a month at the following rate in each of the following years:

2018	2019	2020	2021	2022	2023
\$0.0935	\$0.0972	\$0.1011	\$0.1052	\$0.1094	\$0.1138

C. Averaging for Summer Consumption Charge. During the billing months of June, July, August, September and October, the consumption charge for each such month shall be based on the average water consumption of the preceding billing months of November, December, January, February and March recorded for that account.

D. Administrative Procedures shall be established to determine an equitable average to use for charging summer consumption, using historical data from the city utility billing system where available, or using a pre-determined default number for customers for new accounts established after September 30th of the preceding year.

E. Customers installing an irrigation meter for outside watering only will be exempt from the summer sewer average charge and will be billed for sewer charges based on actual usage for their household meter account.

F. Administrative procedures shall be established for customers to request a reduced level of service when an address is vacant. This request exempts the customer from the summer sewer average charge, and all sewer charges will be paid based on consumption. A reasonable fee will be charged to the account to cover the administrative costs of processing this request.

G. Eligible low-income senior citizens and disabled customers living in single-family residences shall receive a discount of seventeen percent of the monthly basic charge for sewer services. The City shall establish the eligibility requirements that must be met in order to receive any discount.

14.28.030 Schedule 2: Single-family residential and duplex without water service.

Single-family residential and duplex sewer customers without City of Shelton water service will be charged the following monthly flat rate for sewer service in each of the following years:

2018	2019	2020	2021	2022	2023
\$119.95	\$124.75	\$129.74	\$134.93	\$140.32	\$145.94

14.28.040 Schedule 3: Triplex, multi-family, mobile home and trailer parks.

A. Basic Charge. For each triplex or multifamily residence, mobile home or trailer park having more than two single-family residential units or spaces, the following monthly basic charge per dwelling unit shall apply in each of the following years:

2018	2019	2020	2021	2022	2023
\$46.73	\$48.60	\$50.54	\$52.56	\$54.67	\$56.85

B. Consumption Charge. In addition to the basic charge, each triplex or multifamily residence, mobile home or trailer park account shall pay a consumption charge for each cubic foot consumed in a month greater than a consumption of four hundred sixty cubic feet per unit at the following rate in each of the following years:

2018	2019	2020	2021	2022	2023
\$0.1010	\$0.1050	\$0.1092	\$0.1136	\$0.1182	\$0.1229

C. Averaging for Summer Consumption Charge. During the billing months of June, July, August, September and October, the consumption charge for each such month shall be based on the average water consumption of the preceding billing months of November, December, January, February and March recorded for that account.

D. Administrative procedures shall be established to determine an equitable average to use for charging summer consumption, using historical data from the city utility billing system, or using a predetermined default number for customers for new accounts established after September 30th of the preceding year.

E. Customers installing an irrigation meter for outside watering only will be billed for sewer charges based on actual usage for their household meter(s).

F. Administrative provisions shall be established for customers to request a reduced level of service when an address is vacant. This request exempts the customer from the summer sewer average charge, and all sewer charges will be paid based on consumption. A reasonable fee will be charged to the account to cover the administrative costs of processing this request.

14.28.050 Schedule 4: Commercial

A. Basic Charge. Each commercial account that is served shall pay a monthly basic charge based on monthly usage in each of the following year as follows:

	<u>2018</u>	<u>2019</u>	<u>2020</u>	<u>2021</u>	<u>2022</u>	<u>2023</u>
0 c.f. up to 1,000 c.f.	\$59.45	\$61.83	\$64.30	\$66.87	\$69.55	\$72.33
1,001 c.f. up to 2,000 c.f.	\$88.92	\$92.48	\$96.18	\$100.02	\$104.02	\$108.18
Over 2,000 c.f.	\$123.34	\$128.27	\$133.40	\$138.74	\$144.29	\$150.06

B. Consumption Charge. In addition to the basic charge, each commercial account shall pay a consumption charge for each cubic foot of water consumed in a month at the following rate each of the following years:

<u>2018</u>	<u>2019</u>	<u>2020</u>	<u>2021</u>	<u>2022</u>	<u>2023</u>
\$0.1062	\$0.1104	\$0.1149	\$0.1195	\$0.1242	\$0.1292

14.28.060 Schedule 5: Hotel/Motel.

A. Basic Charge. Each unit of accommodation of a hotel or motel that is served shall pay a monthly basic charge per unit in each of the following years as follows:

<u>2018</u>	<u>2019</u>	<u>2020</u>	<u>2021</u>	<u>2022</u>	<u>2023</u>
\$8.99	\$9.35	\$9.72	\$10.11	\$10.52	\$10.94

B. Consumption Charge. In addition to the basic charge, each hotel/motel account shall pay a consumption charge for each cubic foot consumed in a month greater than a consumption of eighty-four cubic feet per unit at the following rate in each of the following years:

<u>2018</u>	<u>2019</u>	<u>2020</u>	<u>2021</u>	<u>2022</u>	<u>2023</u>
\$0.1062	\$0.1104	\$0.1149	\$0.1195	\$0.1242	\$0.1292

Section 2.

Severability. If any section, subsection, paragraph, sentence, clause or phrase of this ordinance is declared unconstitutional or invalid for any reason, such invalidity shall not affect the validity or effectiveness of the remaining portions of this ordinance.

Section 3.

Savings Clause. Chapter 14.28 of the Shelton Municipal Code shall remain in full force and effect until such date as this ordinance becomes effective.

Section 4.

Effective Date. This ordinance shall take effect thirty (30) days after its passage, approval, and publication as required by law. The 2018 rates and charges herein shall become effective as part of the January 2018 billings and annually in January of the years 2019 through 2023.

INTRODUCED the 27th day of November, 2017.

ADOPTED by the City Commission of the City of Shelton, Mason County, Washington at a regular open public meeting held the _____ day of December 2017, the following Commissioners being present and voting in favor of this ordinance.

ATTEST:

City Clerk Ogg

Mayor Cronic

Commissioner Moore

Commissioner McDowell



**CITY OF SHELTON
COMMISSION BRIEFING REQUEST
(Please Use Bolded Information Inserts)**

Touch Date: 11/21/2017
Brief Date: 11/27/2017
Action Date: **12/4/2017**

Department: Legislative
Presented By: **Jamie Ogg**

**APPROVED FOR COMMISSION
PACKET:**

Action Requested:

ROUTE TO:

REVIEWED:

PROGRAM/PROJECT TITLE:

☐

Ordinance

☐ Dept. Head

Mason Transit Authority Board

☒

Resolution

☐ Finance Director

ATTACHMENTS:

☒

Motion

☒ Attorney

Resolution No. 1112-1217

☐

Other

☒ City Clerk

☐ City Manager

DESCRIPTION OF THE PROGRAM/PROJECT AND BACKGROUND INFORMATION:

Pursuant to RCW 36.57A.055, a meeting of representatives from the component jurisdictions within the Mason County Public Transportation Benefit Area, namely the three County Commissioners and a City Commissioner, was held on September 26, 2017, and the meeting was continued until November 8, 2017.

The Board Composition Review Committee has a recommendation concerning the composition of the Mason Transit Authority Board, which recommendation is to be approved by the Mason County Commission and Shelton City Council;

Section 1. The Mason County Public Transportation Benefit Area (Mason Transit Authority) Board composition shall be as follows:

Three (3) Mason County Commissioners;
One (1) City of Shelton Council member;
Five (5) members who shall be elected officials selected by the Mason County Commissioners with the goal of seeking equal voting representation among the County commission districts.

ANALYSIS/OPTIONS/ALTERNATIVES:

BUDGET/FISCAL INFORMATION:

N/A

PUBLIC INFORMATION REQUIREMENTS:

STAFF RECOMMENDATION/MOTION:

Staff recommends that the commission concur to place Resolution No. 1112-1217 on the action agenda for December 4th, 2017.

RESOLUTION NO. 1112-1217

A RESOLUTION OF THE CITY OF SHELTON, WASHINGTON, APPROVING THE COMPOSITION OF THE MASON TRANSIT AUTHORITY BOARD.

WHEREAS, pursuant to RCW 36.57A.055, a meeting of representatives from the component jurisdictions within the Mason County Public Transportation Benefit Area, namely the three County Commissioners and a City Commissioner, was set for September 26, 2017, to be held at 1:00 PM at the Transit-Community Center Conference Room, 601 West Franklin Street in Shelton; and

WHEREAS, that Board Composition Review Committee meeting was continued until November 8, 2017 to be held 12:30 PM at the Mason Transit Administrative Office Conference Room located at 790 E. Johns Prairie Rd in Shelton; and

WHEREAS, notice of the continued meeting was conspicuously posted at the Transit-Community Center Conference Room and at the Mason Transit Authority Administrative Offices; and

WHEREAS, the November 8, 2017, meeting was held and attended by all four members; and

WHEREAS, the Board Composition Review Committee has a recommendation concerning the composition of the Mason Transit Authority Board, which recommendation is to be approved by the Mason County Commission and Shelton City Commission;

NOW THEREFORE, the City Commission of the City of Shelton resolves as follows:

Section 1. The Mason County Public Transportation Benefit Area (Mason Transit Authority) Board composition shall be as follows:

Three (3) Mason County Commissioners;

One (1) City of Shelton Commission member (Council member upon completion of reorganization to Council form of government);

Five (5) members who shall be elected officials selected by the Mason County Commissioners with the goal of seeking equal voting representation among the County commission districts.

Board members so appointed shall serve a four-year term. Vacancies through resignation or disqualification shall be filled by the County Commission to fill the unexpired term.

Section 2. The Board composition shall also contain one (1) non-voting labor representative as set forth in RCW 36.57A.050.

Section 3. The new Board composition shall be effective as of January 1, 2018.

INTRODUCED the 27th day of November, 2017

APPROVED by the City Commission of the City of Shelton, Mason County, Washington at a regular open public meeting held the 4th day of December, 2017, the following Commissioners being present and voting in favor of this resolution.

ATTEST:

City Clerk

Mayor Cronic

Commissioner McDowell

Commissioner Moore

Mason County FD #5

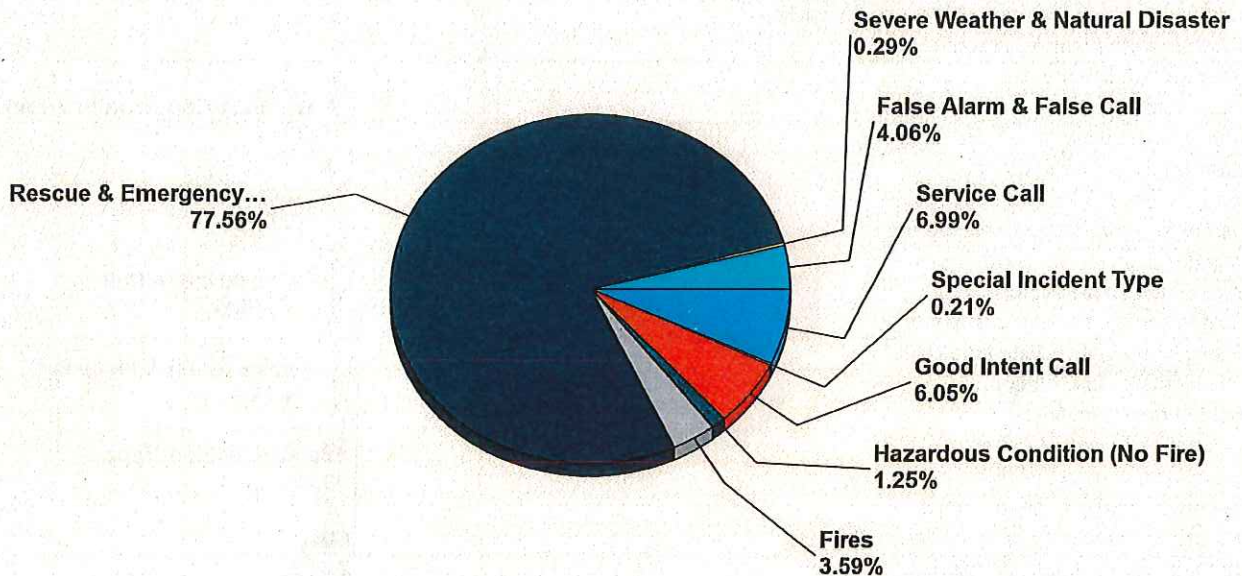


Shelton, WA

This report was generated on 11/20/2017 2:07:10 PM

Breakdown by Major Incident Types for Date Range

Zone(s): All Zones | Start Date: 01/01/2017 | End Date: 11/20/2017



MAJOR INCIDENT TYPE	# INCIDENTS	% of TOTAL
Fires	184	3.59%
Rescue & Emergency Medical Service	3974	77.56%
Hazardous Condition (No Fire)	64	1.25%
Service Call	358	6.99%
Good Intent Call	310	6.05%
False Alarm & False Call	208	4.06%
Severe Weather & Natural Disaster	15	0.29%
Special Incident Type	11	0.21%
TOTAL	5124	100.00%

Only REVIEWED incidents included. Summary results for a major incident type are not displayed if the count is zero.

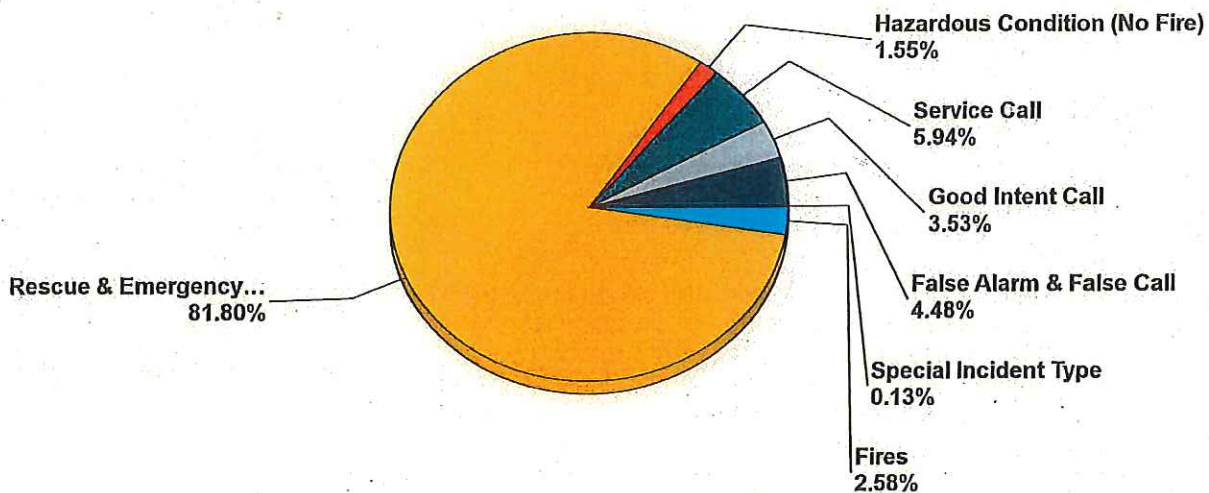
Mason County FD #5

Shelton, WA

This report was generated on 11/20/2017 2:07:36 PM

Breakdown by Major Incident Types for Date Range

Zone(s): Area 7 - Station 58 Shelton | Start Date: 01/01/2017 | End Date: 11/20/2017



MAJOR INCIDENT TYPE	# INCIDENTS	% of TOTAL
Fires	60	2.58%
Rescue & Emergency Medical Service	1901	81.80%
Hazardous Condition (No Fire)	36	1.55%
Service Call	138	5.94%
Good Intent Call	82	3.53%
False Alarm & False Call	104	4.48%
Special Incident Type	3	0.13%
TOTAL	2324	100.00%

Only REVIEWED incidents included. Summary results for a major incident type are not displayed if the count is zero.



An overfilled cooking pot will cause cooking oil to spill when the turkey is put in, and a partially frozen turkey will cause cooking oil to splatter when put in the pot.



Without temperature controls, deep fryers can overheat oil to the point of starting a fire.

Prevent a Turkey Fryer Fire



Did you know?

Thanksgiving is the peak day for home cooking fires.

When you fry foods, you increase the risk of a cooking fire.



Five dangers of deep frying a turkey:

1. Turkey fryers can easily tip over, spilling hot cooking oil over a large area.
2. An overfilled cooking pot will cause cooking oil to spill when the turkey is put in, and a partially frozen turkey will cause cooking oil to splatter when put in the pot.
3. Even a small amount of cooking oil spilling on a hot burner can cause a large fire.
4. Without temperature controls, deep fryers can overheat oil to the point of starting a fire.
5. The sides of the cooking pot, lid and pot handles can get dangerously hot.

Christmas Tree Safety



As you deck the halls this holiday season, be fire smart. A small fire that spreads to a Christmas tree can grow large very quickly.



PICKING THE TREE

- Choose a tree with fresh, green needles that do not fall off when touched.



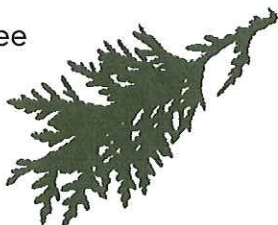
PLACING THE TREE

- Before placing the tree in the stand, cut 2" from the base of the trunk.
- Make sure the tree is at least three feet away from any heat source, like fireplaces, radiators, candles, heat vents or lights.
- Make sure the tree is not blocking an exit.
- Add water to the tree stand. Be sure to add water daily.



LIGHTING THE TREE

- Use lights that are listed by a qualified testing laboratory. Some lights are only for indoor or outdoor use.
- Replace any string of lights with worn or broken cords or loose bulb connections. Read manufacturer's instructions for number of light strands to connect.
- Never use lit candles to decorate the tree.
- Always turn off Christmas tree lights before leaving home or going to bed.



After Christmas

Get rid of the tree after Christmas or when it is dry. Dried-out trees are a fire danger and should not be left in the home or garage, or placed outside against the home.

Check with your local community to find a recycling program.

Bring outdoor electrical lights inside after the holidays to prevent hazards and make them last longer.

FACTS

- ! **One quarter** of home Christmas tree fires are caused by electrical problems.
- ! Although Christmas tree fires are not common, when they do occur, they are more likely to be serious.
- ! A heat source too close to the tree causes roughly **one in every four** of the fires.

Central Mason Fire & EMS

www.cmfe.org



Your Source for SAFETY Information

NFPA Public Education Division • 1 Batterymarch Park, Quincy, MA 02169



**CITY OF SHELTON
COMMISSION BRIEFING REQUEST
(Please Use Bolded Information Inserts)**

Touch Date:
Brief Date: November 27, 2017
Action Date: N/A

Department: Public Works
Presented By: **Craig Gregory**

**APPROVED FOR COMMISSION
PACKET:**

Action Requested:

ROUTE TO:

REVIEWED:

PROGRAM/PROJECT TITLE:

- ☒ Dept. Head _____
☐ Finance Director _____
☐ Attorney _____
☐ City Clerk _____
☐ City Manager _____

**Oakland Bay/Hammersley Inlet
Dye Testing**

ATTACHMENTS:

- ☐ Ordinance
☐ Resolution
☐ Motion
☐ Other

DESCRIPTION OF THE PROGRAM/PROJECT AND BACKGROUND INFORMATION:

Officials from the Washington State Department of Health, City of Shelton, Squaxin Tribe, and other federal and state agencies will be conducting a dye test in Oakland Bay and Hammersley Inlet from December 1st through December 4th. The dye test is part of a voluntary study to identify areas where pollution may make shellfish unsafe for human consumption. Officials will also be working to identify the potential source(s) of the Norovirus outbreak that occurred earlier this year.

Red dye will be added to treated wastewater from Shelton's main treatment plant. The red dye will likely be visible in Oakland Bay and Hammersley Inlet during the first day of the dye test on December 1st. While a change in water color may be observed, it is important to note that the dye is not harmful to people, marine life, or the environment.

Monitoring stations have been setup throughout Oakland Bay and Hammersley Inlet to measure dye levels. Tracking wastewater from the wastewater treatment plant, onsite septic systems, and other drainage areas throughout the area will help to identify areas where shellfish may be impacted by pollution.

Earlier this year, in response to the Norovirus outbreak, the Washington State Department of Health did an onsite evaluation of the city's wastewater treatment plant, which included a review of the discharge monitoring reports. It was determined that the facility meets all National Pollutant Discharge Elimination System (NPDES) discharge permit conditions. The City of Shelton has historically taken extra precautions to ensure that the wastewater treatment plant exceeds the Washington State Department of Ecology testing standards. The city is sensitive to the nearby shellfish industry and the surrounding environment, and is committed to maintaining an elevated standard of performance.

ANALYSIS/OPTIONS/ALTERNATIVES:

N/A

BUDGET/FISCAL INFORMATION:

N/A

PUBLIC INFORMATION REQUIREMENTS:

A press release was sent out November 21, 2017. Any other information can be found by contacting the City of Shelton Public Works Department.

STAFF RECOMMENDATION/MOTION:

N/A

City Council Meetings Around Our Region

City	Frequency	Day	Time	Study Session
Bremerton	2 per month	Tuesday	7:00pm	2 per month before Council meeting
Centralia	2 per month	Tuesday	7:00pm	
Chehalis	2 per month	Tuesday	5:00pm	
Dupont	2 per month	Tuesday	7:00pm	
Elma	2 per month	Tuesday	7:00pm	1 per month before Council meeting
Hoquiam	2 per month	Tuesday	7:00pm	
Lacey	2 per month	Tuesday	7:00pm	2 per month before Council meeting
Olympia	4 per month	Tuesday	7:00pm	
Port Orchard	2 per month	Tuesday	7:00pm	1 per month before Council meeting
Tenino	2 per month	Tuesday	7:30pm	
Tumwater	2 per month	Tuesday	7:00pm	2 per month before Council meeting
Yelm	2 per month	Tuesday	6:00pm	

	Council Ave. Annual Salary	Mayor Ave. Annual Salary	Mayor Salary Difference
Council-Manager Cities (all population)	\$ 9,574	\$ 13,069	+37%
Council-Manager Cities (7500-14999)	\$ 6,600	\$ 9,100	+38%
All Cities (7500-14999)	\$ 5,981		

Salary Example	\$ 6,000	\$ 8,400	+40%
----------------	----------	----------	------

Scenario: Current

	Base Salary	Meeting Compensation	Total Salary
Commissioner Public Safety	\$ 15,600	\$ 9,800	\$ 25,400
Commissioner Finance	\$ 15,600	\$ 9,800	\$ 25,400
Commissioner Public Works	\$ 15,600	\$ 9,800	\$ 25,400
			\$ 76,200

Scenario: 5 Council + 2 Current

	Base Salary	Meeting Compensation	Total Salary	
Council Position 1	\$ 6,000	\$ -	\$ 6,000	
Council Position 2	\$ 6,000	\$ -	\$ 6,000	
Council Position 3	\$ 6,000	\$ -	\$ 6,000	
Council Position 4	\$ 6,000	\$ -	\$ 6,000	
Council Position 5 (Mayor)	\$ 8,400	\$ -	\$ 8,400	
Council Position 6 (current)	\$ 15,600	\$ 9,800	\$ 25,400	Total Change
Council Position 7 (current)	\$ 15,600	\$ 9,800	\$ 25,400	
			\$ 83,200	+\$7,000

Scenario: 5 Council + 2 Reduced

	Base Salary	Meeting Compensation	Total Salary	
Council Position 1	\$ 6,000	\$ -	\$ 6,000	
Council Position 2	\$ 6,000	\$ -	\$ 6,000	
Council Position 3	\$ 6,000	\$ -	\$ 6,000	
Council Position 4	\$ 6,000	\$ -	\$ 6,000	
Council Position 5 (Mayor)	\$ 8,400	\$ -	\$ 8,400	
Council Position 6 (current)	\$ 15,600	\$ -	\$ 15,600	Total Change
Council Position 7 (current)	\$ 15,600	\$ -	\$ 15,600	
			\$ 63,600	-\$12,600

*Estimates for monthly salary based on 2 mtgs/month

Population Group	Jurisdiction	Gov't	Council Annual*	Mayor Annual*
7,500-14,999	Airway Heights (8,460)	CM	9,000	14,400
500-1,499	Albion (540)		-	
2,500-7,499	Algona (3,180)		3,000	
0-499	Almira (275)		600	
15,000-29,999	Anacortes (16,780)		14,400	
15,000-29,999	Arlington (18,690)		10,800	
50,000+	Auburn (78,960)		14,688	
15,000-29,999	Bainbridge Island (23,950)	CM	12,000	15,000
15,000-29,999	Battle Ground (20,370)	CM	4,800	6,600
2,500-7,499	Benton City (3,360)		1,800	
500-1,499	Bingen (735)		720	
2,500-7,499	Blaine (5,075)	CM	3,600	6,000
15,000-29,999	Bonney Lake (20,500)		10,200	
30,000-49,999	Bothell (44,370)	CM	12,996	14,844
30,000-49,999	Bremerton (40,630)		12,000	
1,500-2,499	Brewster (2,400)		1,080	
1,500-2,499	Bridgeport (2,480)		960	
2,500-7,499	Brier (6,560)		2,400	
2,500-7,499	Buckley (4,670)		3,000	
50,000+	Burien (50,680)	CM	7,200	9,000
7,500-14,999	Burlington (8,715)		9,600	
15,000-29,999	Camas (23,080)		9,228	
500-1,499	Carbonado (665)		540	
1,500-2,499	Carnation (2,030)	CM	2,400	4,800
2,500-7,499	Cashmere (3,075)		1,200	
0-499	Cathlamet (490)		600	
15,000-29,999	Centralia (16,940)	CM	2,400	4,800
2,500-7,499	Chelan (4,150)		6,600	
7,500-14,999	Cheney (11,880)		5,400	
2,500-7,499	Chewelah (2,655)		1,200	
2,500-7,499	Clarkston (7,250)		3,000	
1,500-2,499	Cle Elum (1,875)		3,000	
2,500-7,499	Clyde Hill (3,015)		1,200	
2,500-7,499	Colfax (2,795)		1,800	
7,500-14,999	College Place (9,440)		4,500	
0-499	Colton (435)		750	
2,500-7,499	Colville (4,730)		1,200	
0-499	Conconully (230)		-	
500-1,499	Concrete (740)		840	
2,500-7,499	Connell (5,450)		2,100	
1,500-2,499	Cosmopolis (1,660)		1,800	
500-1,499	Coulee City (565)		240	
500-1,499	Coulee Dam (1,100)		600	
1,500-2,499	Coupeville (1,905)		-	
15,000-29,999	Covington (19,850)	CM	7,716	10,164
0-499	Cusick (205)		1,680	
500-1,499	Darrington (1,400)		960	
1,500-2,499	Davenport (1,700)		960	
2,500-7,499	Dayton (2,555)		1,800	
2,500-7,499	Deer Park (4,105)		2,400	
30,000-49,999	Des Moines (30,860)	CM	10,000	14,004
7,500-14,999	DuPont (9,385)		4,500	
7,500-14,999	East Wenatchee (13,600)		7,200	
2,500-7,499	Eatonville (2,950)		1,800	
7,500-14,999	Edgewood (10,420)		6,000	
30,000-49,999	Edmonds (41,260)		12,000	
500-1,499	Electric City (1,020)		-	

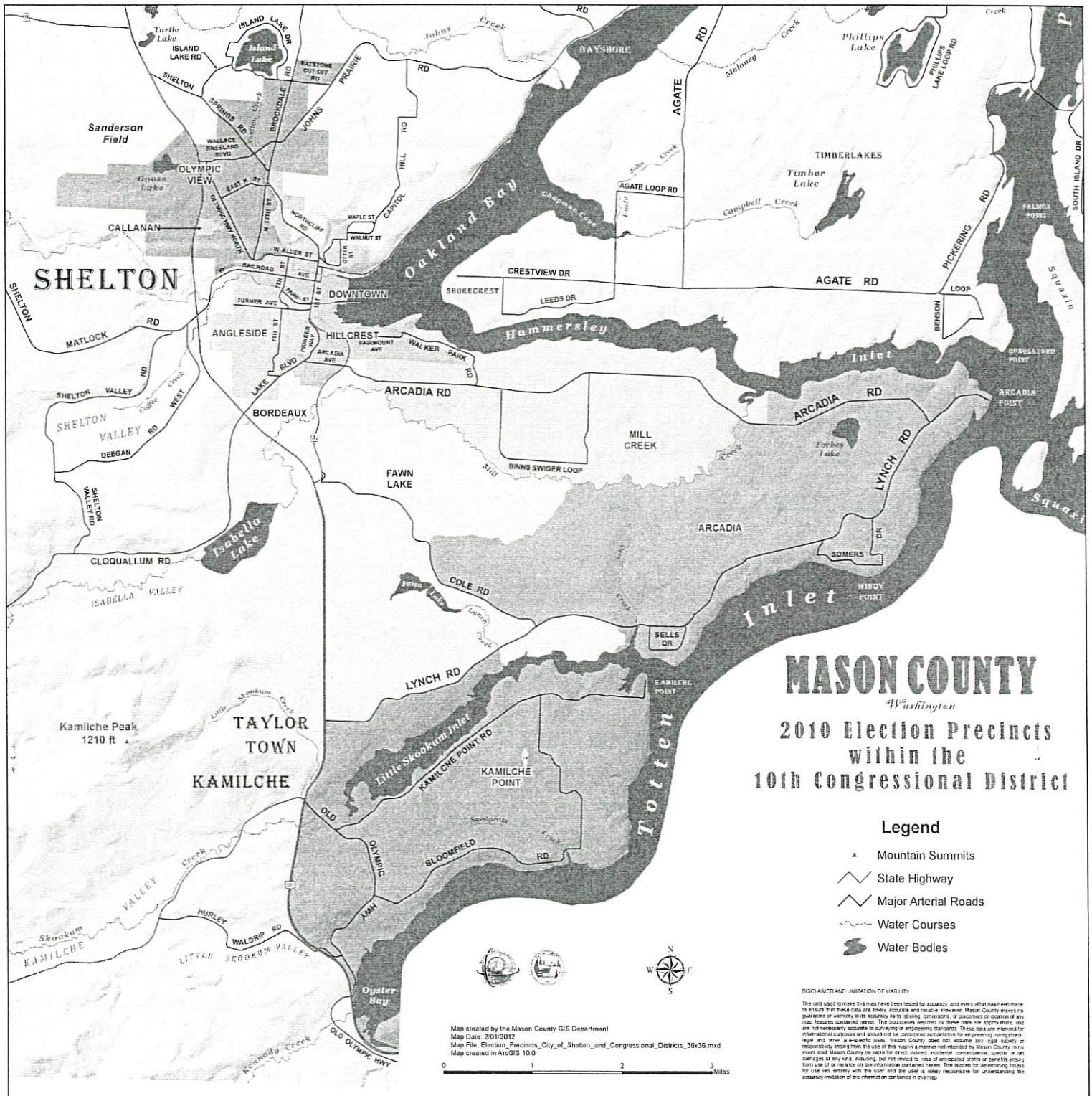
15,000-29,999	Ellensburg (19,550)	CM	3,000	6,000
2,500-7,499	Elma (3,145)		3,000	
0-499	Endicott (295)		360	
500-1,499	Entiat (1,195)		1,800	
7,500-14,999	Enumclaw (11,450)		3,900	
7,500-14,999	Ephrata (8,005)		2,400	
50,000+	Everett (109,800)		28,056	
2,500-7,499	Everson (2,630)		1,800	
500-1,499	Fairfield (620)		1,200	
50,000+	Federal Way (96,350)		14,220	
7,500-14,999	Ferndale (13,470)		7,200	
7,500-14,999	Fife (10,100)	CM	7,800	9,600
2,500-7,499	Fircrest (6,640)	CM	3,852	5,052
1,500-2,499	Friday Harbor (2,255)		6,600	
500-1,499	George (720)		-	
7,500-14,999	Gig Harbor (9,560)		7,200	
1,500-2,499	Gold Bar (2,125)		1,200	
2,500-7,499	Goldendale (3,490)		1,200	
2,500-7,499	Granger (3,905)		960	
2,500-7,499	Granite Falls (3,485)	CM	1,200	1,200
500-1,499	Harrah (660)		-	
0-499	Harrington (415)		-	
0-499	Hartline (155)		360	
0-499	Hatton (110)		480	
7,500-14,999	Hoquiam (8,560)		3,120	
500-1,499	Ilwaco (945)		2,400	
0-499	Ione (445)		1,134	
30,000-49,999	Issaquah (36,030)		15,000	
0-499	Kahlotus (165)		-	
2,500-7,499	Kalama (2,620)		2,400	
7,500-14,999	Kelso (11,980)	CM	4,800	9,600
15,000-29,999	Kenmore (22,580)	CM	9,600	10,800
50,000+	Kennewick (80,280)	CM	11,904	14,292
1,500-2,499	Kettle Falls (1,620)		1,440	
50,000+	Kirkland (86,080)	CM	14,004	17,832
1,500-2,499	Kittitas (1,500)		600	
0-499	Krupp (50)		240	
2,500-7,499	La Center (3,195)		3,300	
500-1,499	La Conner (925)		1,800	
30,000-49,999	Lacey (48,700)	CM	17,100	17,100
0-499	LaCrosse (310)		480	
7,500-14,999	Lake Forest Park (12,990)		7,200	
50,000+	Lakewood (59,280)	CM	14,400	16,800
0-499	Lamont (80)		-	
500-1,499	Langley (1,165)		600	
1,500-2,499	Leavenworth (2,015)		6,000	
7,500-14,999	Liberty Lake (9,910)		4,800	
500-1,499	Lind (550)		720	
30,000-49,999	Longview (37,510)	CM	10,800	18,000
0-499	Lyman (455)		600	
7,500-14,999	Lynden (13,620)		7,200	
30,000-49,999	Lynnwood (36,950)		19,800	
1,500-2,499	Mabton (2,315)		960	
15,000-29,999	Maple Valley (24,900)	CM	6,600	9,900
0-499	Marcus (175)		12	
50,000+	Marysville (65,900)		14,400	
2,500-7,499	Mattawa (4,805)		1,500	
1,500-2,499	McCleary (1,695)		1,200	
2,500-7,499	Medical Lake (4,990)		3,000	
2,500-7,499	Medina (3,205)	CM	-	-

15,000-29,999	Mercer Island (24,210)	CM	2,400	4,800
0-499	Mesa (495)		1,200	
0-499	Metaline (170)		480	
0-499	Metaline Falls (240)		600	
15,000-29,999	Mill Creek (19,960)	CM	6,000	8,400
1,500-2,499	Millwood (1,790)		960	
7,500-14,999	Milton (7,900)		4,800	
15,000-29,999	Monroe (18,350)		9,600	
2,500-7,499	Montesano (4,120)		2,400	
15,000-29,999	Moses Lake (22,720)	CM	6,000	12,000
500-1,499	Mossyrock (760)		480	
15,000-29,999	Mountlake Terrace (21,290)	CM	9,600	12,000
15,000-29,999	Mukilteo (21,240)		6,000	
500-1,499	Naches (860)		1,200	
0-499	Nespelem (245)		-	
7,500-14,999	Newcastle (11,280)	CM	6,000	7,200
1,500-2,499	Newport (2,170)		1,344	
500-1,499	Nooksack (1,490)		1,800	
2,500-7,499	North Bend (6,605)		4,800	
15,000-29,999	Oak Harbor (22,840)		7,404	
0-499	Oakesdale (425)		720	
2,500-7,499	Ocean Shores (6,055)		4,200	
500-1,499	Odessa (905)		360	
2,500-7,499	Okanogan (2,610)		1,500	
50,000+	Olympia (52,160)	CM	21,000	15,000
2,500-7,499	Omak (4,925)		2,400	
1,500-2,499	Oroville (1,705)		2,700	
7,500-14,999	Orting (7,835)		3,600	
7,500-14,999	Othello (8,175)		3,900	
2,500-7,499	Pacific (6,910)		2,400	
500-1,499	Palouse (1,050)		720	
50,000+	Pasco (71,680)	CM	12,000	15,600
500-1,499	Pateros (580)		900	
500-1,499	Pe Ell (645)		600	
500-1,499	Pomeroy (1,395)		1,500	
15,000-29,999	Port Angeles (19,370)	CM	6,600	7,200
7,500-14,999	Port Orchard (13,990)	CM	12,000	
7,500-14,999	Port Townsend (9,500)		6,000	
7,500-14,999	Poulsbo (10,510)		9,000	
2,500-7,499	Prosser (5,965)		3,000	
30,000-49,999	Pullman (33,280)		6,600	
30,000-49,999	Puyallup (40,500)	CM	14,040	16,404
2,500-7,499	Quincy (7,370)		6,000	
2,500-7,499	Raymond (2,885)		2,964	
500-1,499	Reardan (570)		-	
50,000+	Redmond (62,110)		12,000	
50,000+	Renton (102,700)		15,000	
500-1,499	Republic (1,095)		-	
50,000+	Richland (54,150)	CM	13,476	16,476
2,500-7,499	Ridgefield (7,235)	CM	6,000	12,000
1,500-2,499	Ritzville (1,660)		1,560	
500-1,499	Rock Island (1,005)		2,400	
0-499	Rockford (480)		-	
500-1,499	Rosalia (560)		2,400	
500-1,499	Roslyn (890)		720	
500-1,499	Roy (815)		600	
1,500-2,499	Royal City (2,245)		1,440	
500-1,499	Ruston (975)		360	
50,000+	Sammamish (62,240)	CM	10,200	11,400
15,000-29,999	SeaTac (28,850)	CM	12,000	14,400

50,000+	Seattle (713,700)		123,360	
7,500-14,999	Sedro-Woolley (10,950)		6,000	
7,500-14,999	Selah (7,630)		3,900	
2,500-7,499	Sequim (7,280)	CM	3,000	4,920
7,500-14,999	Shelton (10,120)		25,400	
50,000+	Shoreline (55,060)	CM	13,200	15,000
0-499	Skykomish (200)		-	
7,500-14,999	Snohomish (10,010)		6,156	
7,500-14,999	Snoqualmie (13,210)		6,000	
1,500-2,499	Soap Lake (1,550)		840	
1,500-2,499	South Bend (1,620)		1,440	
500-1,499	South Cle Elum (530)		1,500	
0-499	South Prairie (435)		1,800	
0-499	Spangle (275)		600	
50,000+	Spokane Valley (94,890)	CM	9,000	11,700
0-499	Sprague (440)		600	
0-499	Springdale (313)		-	
500-1,499	St. John (505)		-	
2,500-7,499	Stanwood (6,785)		4,200	
2,500-7,499	Steilacoom (6,410)		3,600	
1,500-2,499	Stevenson (1,560)		3,600	
2,500-7,499	Sultan (5,030)		5,400	
1,500-2,499	Sumas (1,571)		1,500	
7,500-14,999	Sumner (9,920)		9,000	
50,000+	Tacoma (208,100)	CM	46,008	101,472
1,500-2,499	Tenino (1,785)		900	
500-1,499	Tieton (1,300)		600	
500-1,499	Toledo (720)		600	
500-1,499	Tonasket (1,110)		1,800	
7,500-14,999	Toppenish (9,085)	CM	4,800	5,400
15,000-29,999	Tukwila (19,660)		15,000	
15,000-29,999	Tumwater (23,210)		9,000	
2,500-7,499	Union Gap (6,220)	CM	7,200	7,200
30,000-49,999	University Place (32,610)	CM	16,896	20,256
500-1,499	Vader (610)		-	
50,000+	Vancouver (176,400)	CM	22,464	28,704
500-1,499	Waitsburg (1,230)		240	
30,000-49,999	Walla Walla (33,840)	CM	4,800	6,000
2,500-7,499	Wapato (5,040)		1,800	
2,500-7,499	Warden (2,730)		1,200	
15,000-29,999	Washougal (15,760)		6,600	
0-499	Washtucna (210)		240	
500-1,499	Waterville (1,175)		840	
0-499	Waverly (117)		450	
30,000-49,999	Wenatchee (34,070)		7,860	
7,500-14,999	West Richland (14,660)		6,000	
1,500-2,499	Westport (2,115)		4,812	
1,500-2,499	White Salmon (2,480)		1,992	
500-1,499	Wilbur (890)		720	
0-499	Wilkeson (490)		240	
0-499	Wilson Creek (218)		300	
0-499	Winthrop (445)		3,120	
7,500-14,999	Woodinville (11,660)	CM	7,200	8,400
2,500-7,499	Woodland (6,035)		3,000	
500-1,499	Woodway (1,340)		-	
1,500-2,499	Yacolt (1,715)		840	
50,000+	Yakima (93,900)	CM	12,900	16,500
7,500-14,999	Yelm (8,665)		7,200	
2,500-7,499	Zillah (3,150)		1,440	

	Council-Manager Cities (all population)	Council-Manager Cities (7500-14999)
Offer Health Insurance	14	0
No Health Insurance	34	5
Did Not Answer	4	1

City	Do you offer health insurance to elected officials?	City Contribution Amount	Description	Blank means they did not answer the question
Airway Heights	None	0		
Bainbridge Island	None	0		
Battle Ground	None	0		
Bellevue	Mayor & Council	7.74%		
Blaine	None	0		
Bothell	None	NA		
Burien	Mayor & Council			
Carnation	None	0		
Centralia	Mayor & Council	\$815	elected officials includes	
Chehalis		0		
Covington	None	0		
Des Moines	None	0		
Ellensburg	None	0		
Fife	None	0		
Fircrest	None	0		
Granite Falls	None	0		
Kelso	None	0		
Kenmore	None	0		
Kennewick	Mayor & Council			
Kirkland	Mayor & Council	100%		
Lacey	None	0		
Lakewood	None	0		
Longview	None	0		
Maple Valley	None	0		
Medina	None	0		
Mercer Island	None	0		
Mill Creek	None	0		
Moses Lake	None	0		
Mountlake Terrace	None	0		
Newcastle	None	0		
Normandy Park	None	0		
Olympia	None	0		
Pasco	Mayor & Council			
Port Angeles	None	0		
Port Townsend	None	0		
Puyallup	Mayor & Council	100%		
Richland	Mayor & Council	88%		
Ridgefield		0		
Sammamish	Mayor & Council	66		
SeaTac	None	0		
Sequim	None	0		
Shelton	Mayor & Council	\$1425 Medical*	*Council members: 1425 Medical,	
Shoreline	Mayor & Council			
Spokane Valley	Mayor & Council	100%		
Sunnyside		0		
Tacoma	Mayor & Council			
Toppenish	None	0		
Union Gap	None	0		
University Place	None	0		
Vancouver	Mayor & Council	Same as regular FTE		
Walla Walla	None	0		
Woodinville		0		
Yakima	Mayor & Council			





Precinct Registration by Language (Active Voters)

Precinct Range: 301 to 304-2

Precinct Set Used: 2013 Re-Appportionment (Active Set)

	English	Other	Total
301 OLYMPIC VIEW	1,381	0	1,381
302 DOWNTOWN	1,010	0	1,010
303 ANGLESIDE	1,149	0	1,149
304 HILLCREST	922	0	922
Total	4,462	0	4,462