



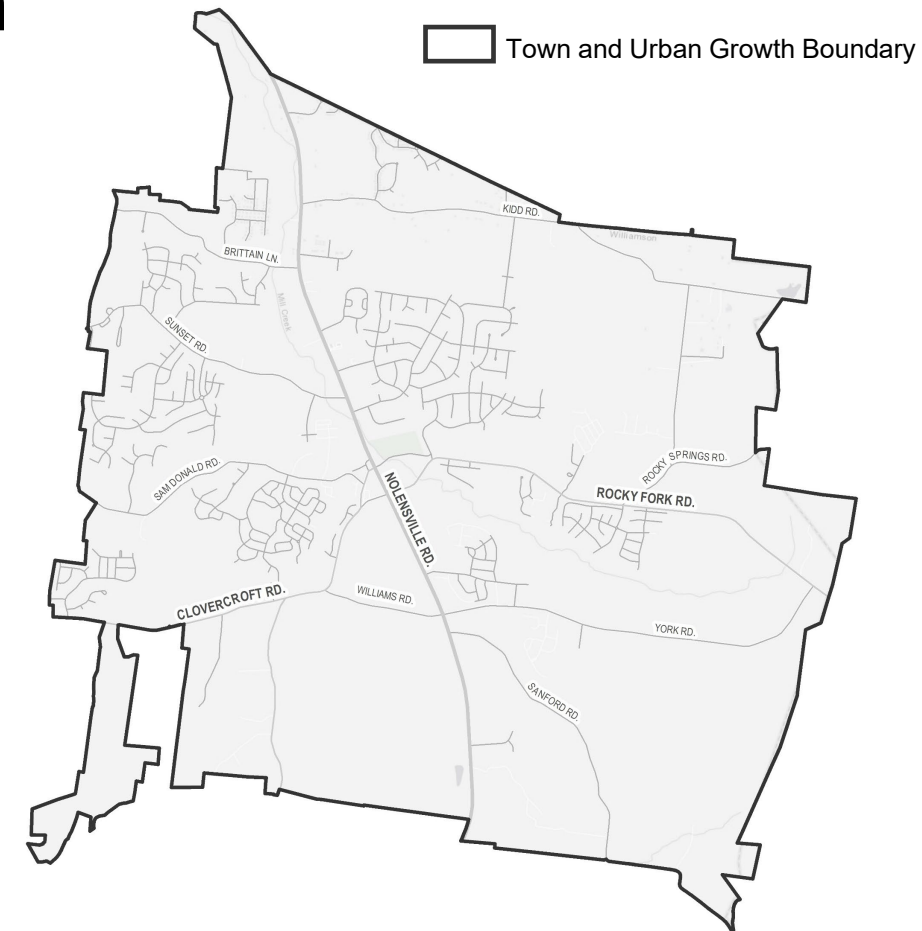
Town of Nolensville Major Thoroughfare Plan Update

August 3, 2021



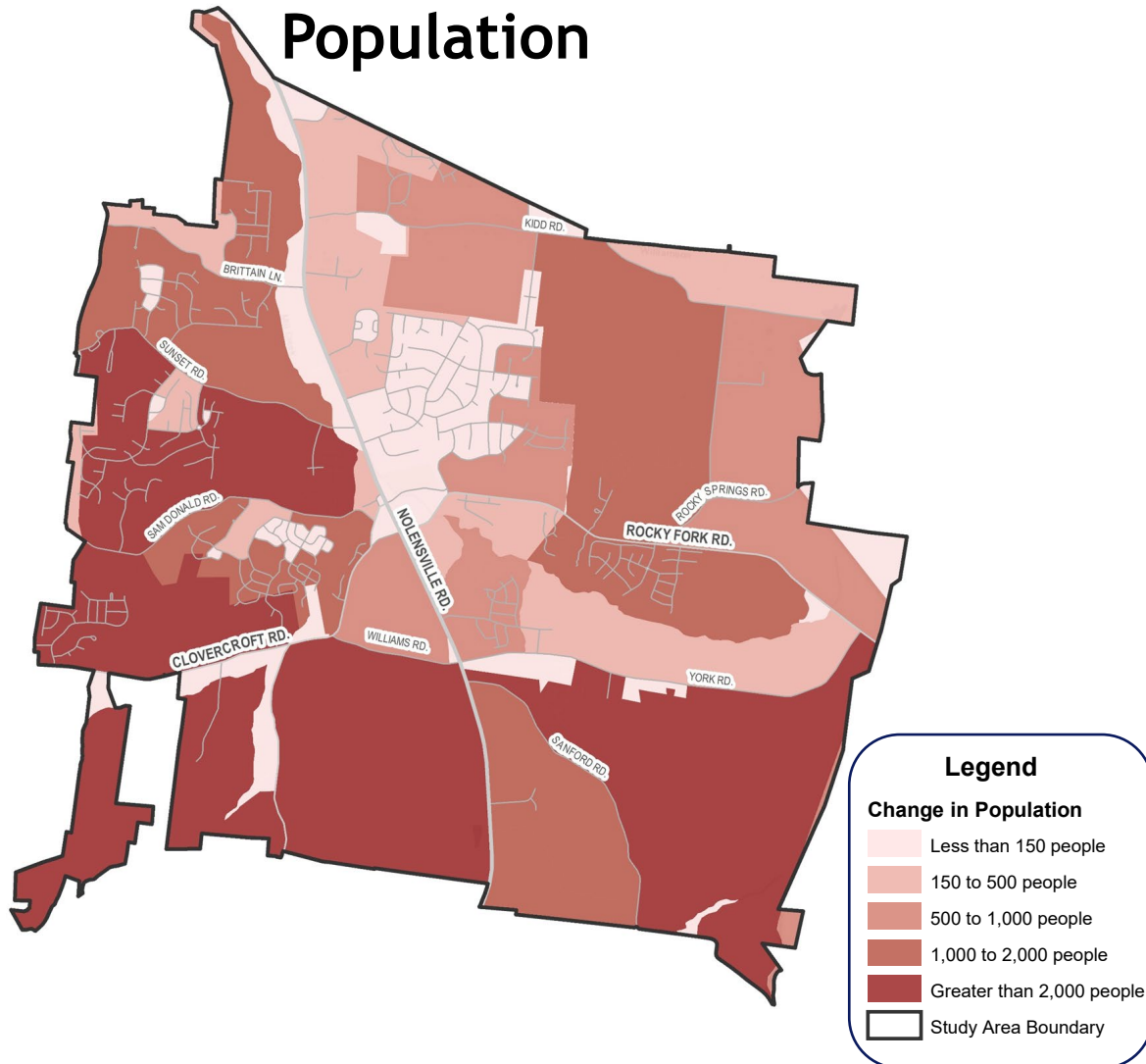
What is a Major Thoroughfare Plan?

- Transportation plan with a 25-year horizon
 - Major streets
 - Traffic operations
 - Bicycle and pedestrian facilities
 - Transit
 - Safety
- List of transportation improvements to help achieve a community's vision

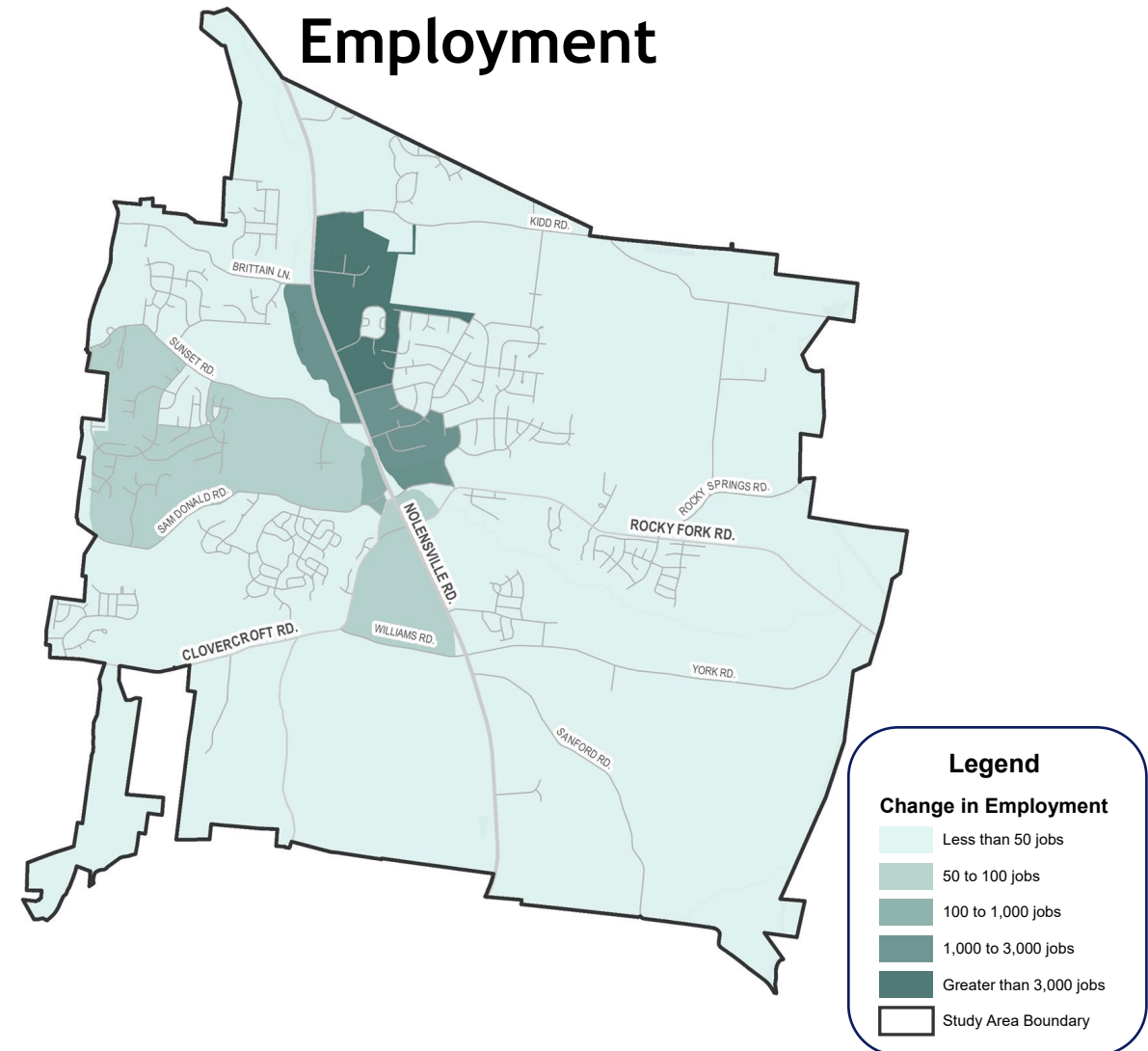


Projected Growth (2017 – 2045)

Population

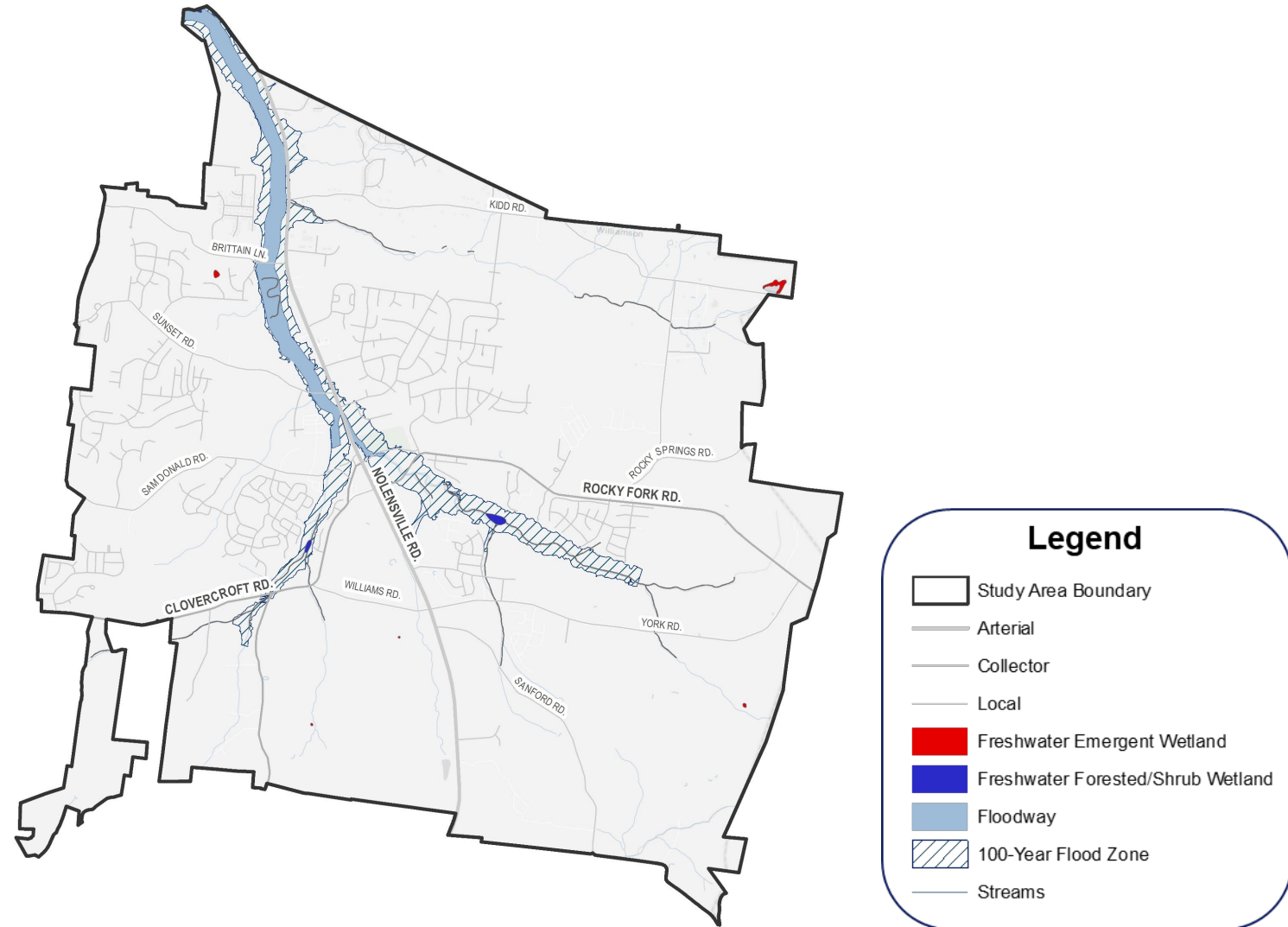


Employment



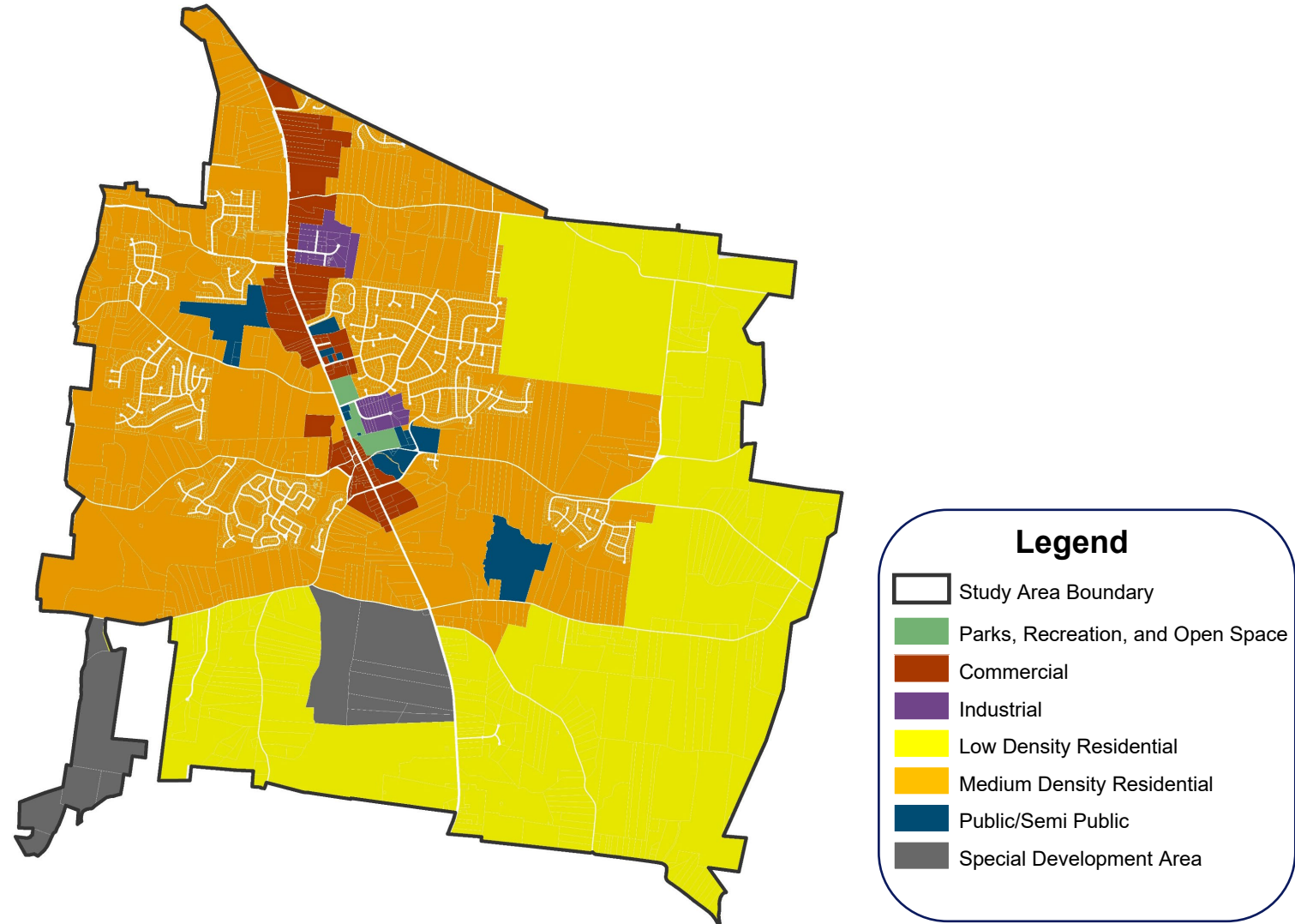
Natural Features

- Nolensville's primary natural feature is Mill Creek, running through the Town and adjacent to Nolensville Road
- Mill Creek is part of the Lower Cumberland Sycamore Watershed

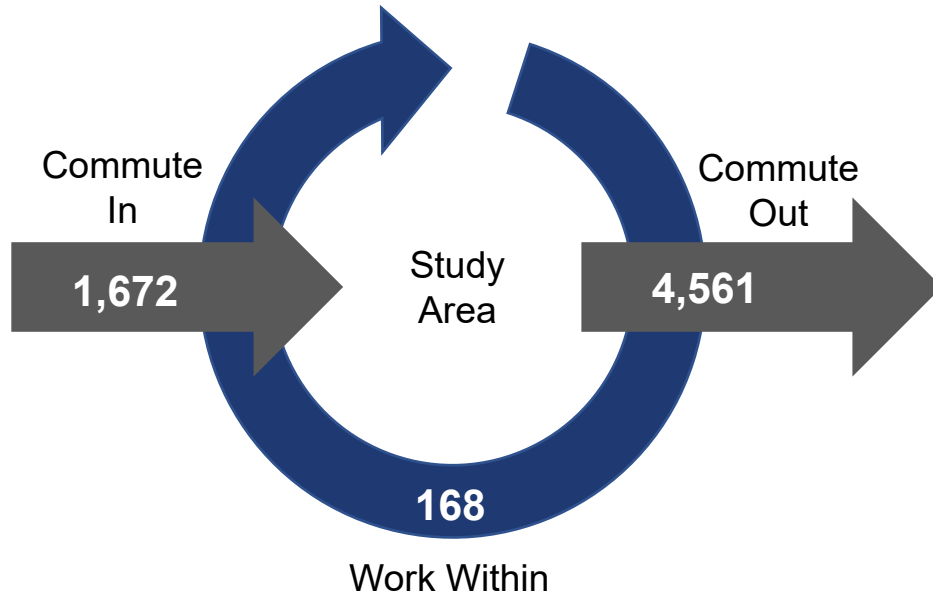


Existing Land Uses

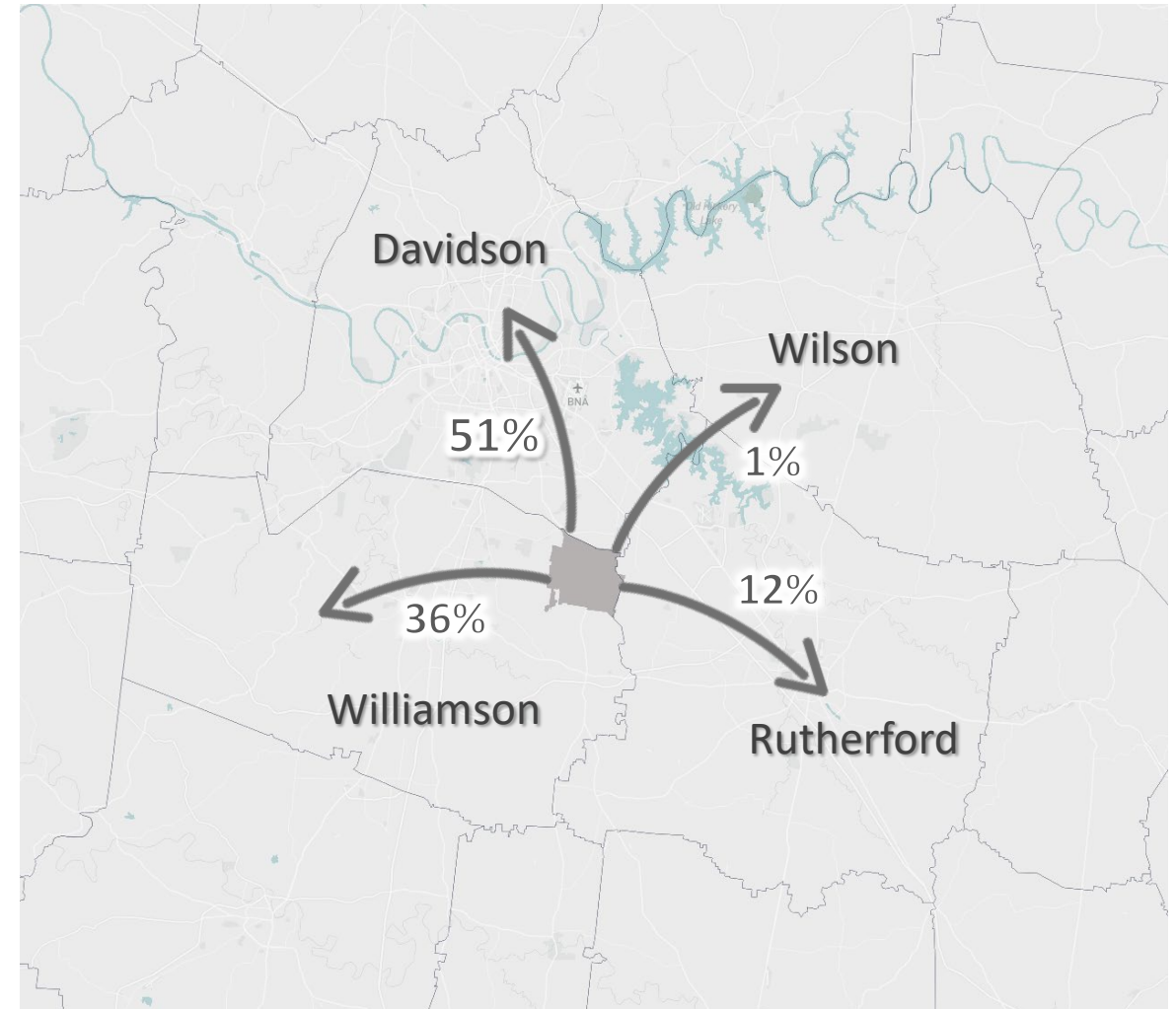
- Low and medium density residential uses account for approximately 85% of the study area
- Approximately 10% of the Town is classified as commercial, industrial, or public uses and 5% is classified as special development areas



Commuting Patterns



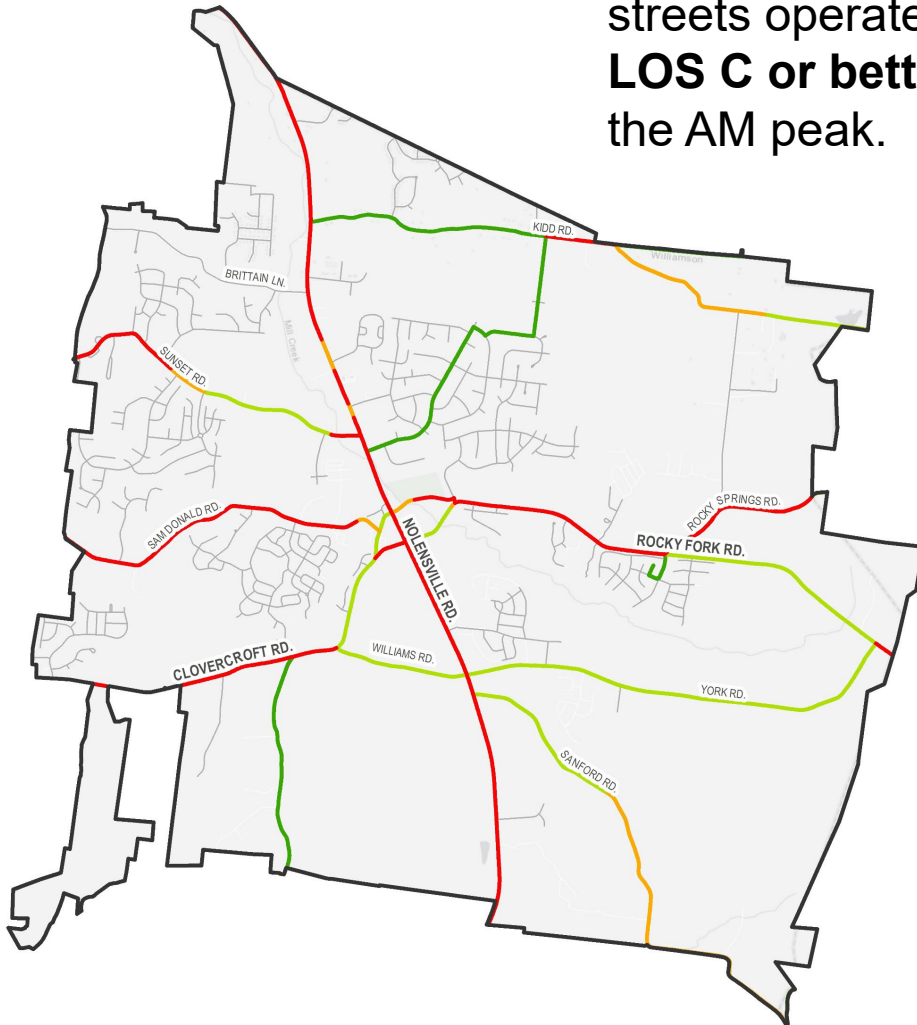
- Approximately 4,600 people live in the study area but commute elsewhere for work
- Nearly 90% commute to Davidson and Williamson Counties, generally traveling 10+ miles every day



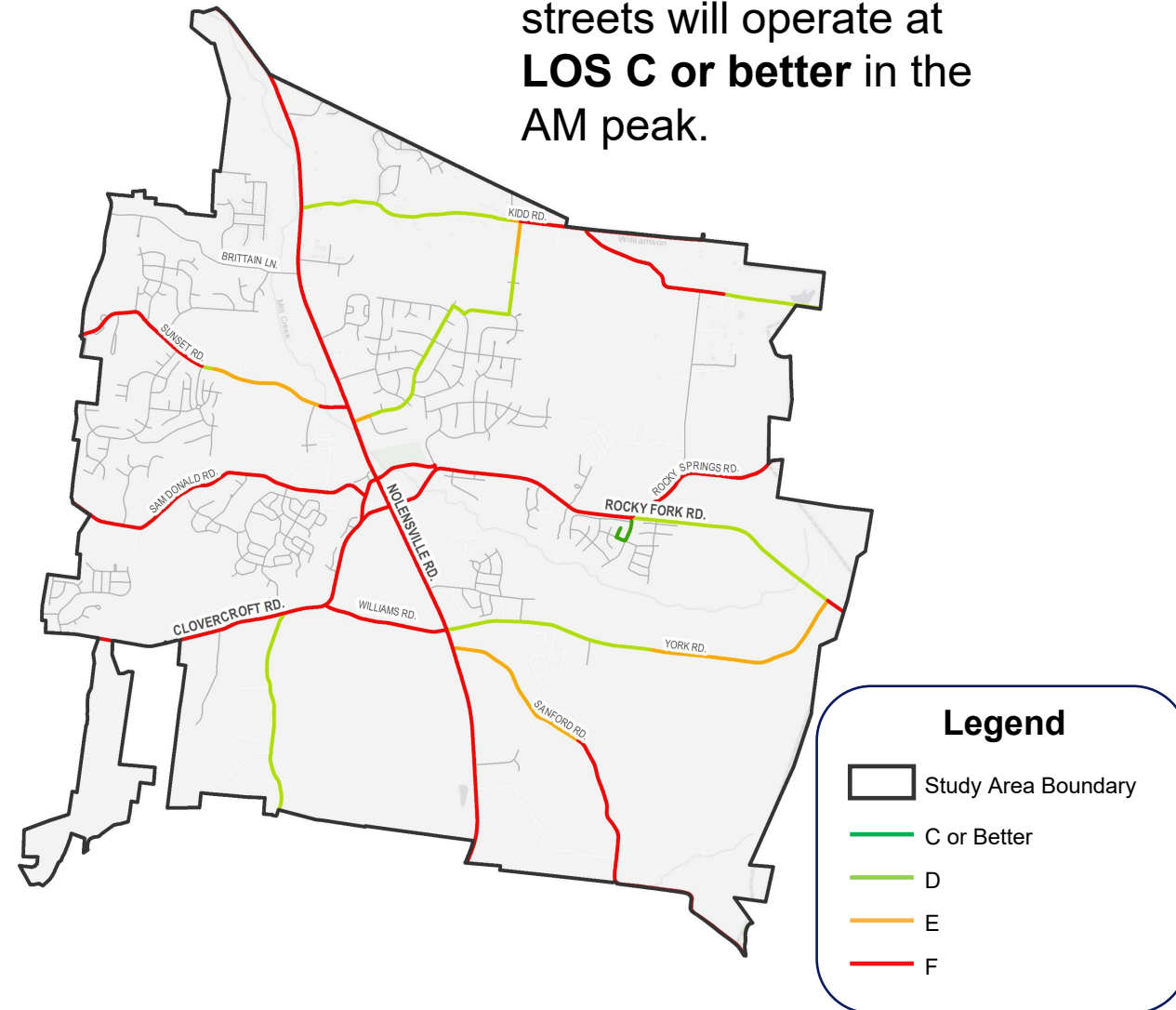
Source: LEHD 2018, U.S. Census Bureau

Streets – Level of Service (2017 and 2045 AM)

In 2017, **22%** of major streets operate at **LOS C or better** in the AM peak.

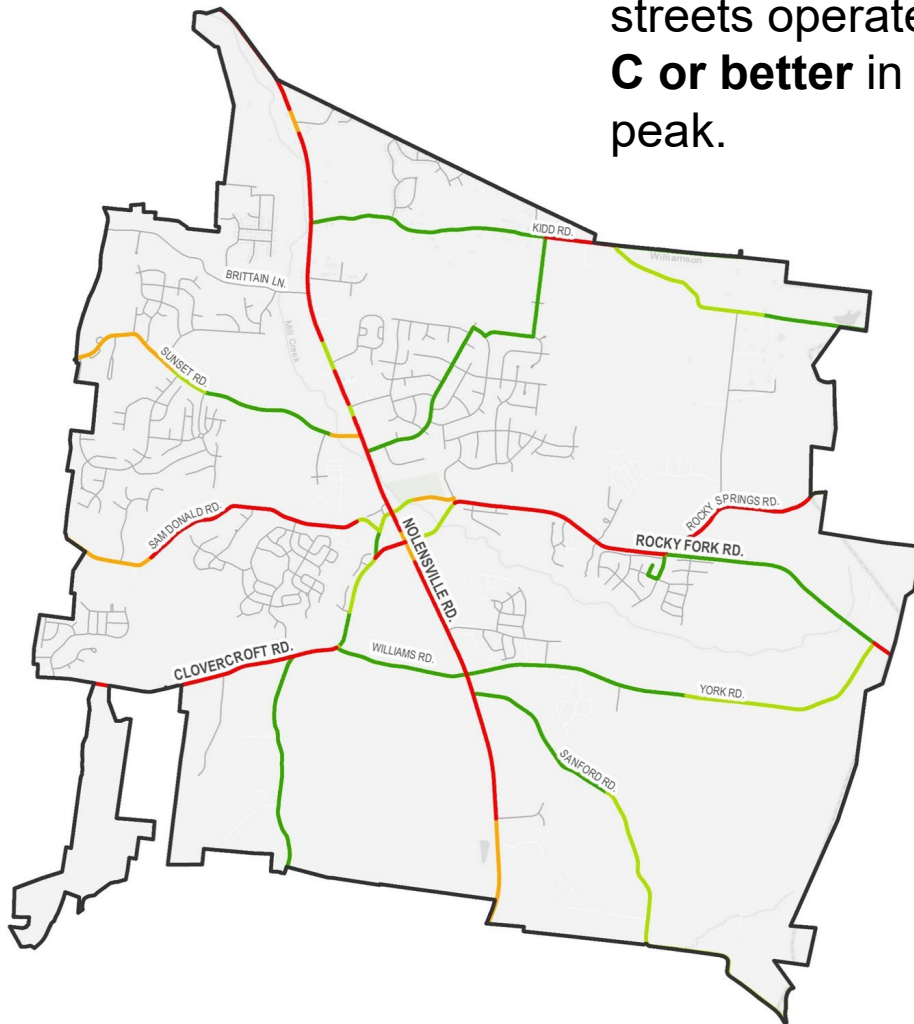


In 2045, **6%** of major streets will operate at **LOS C or better** in the AM peak.

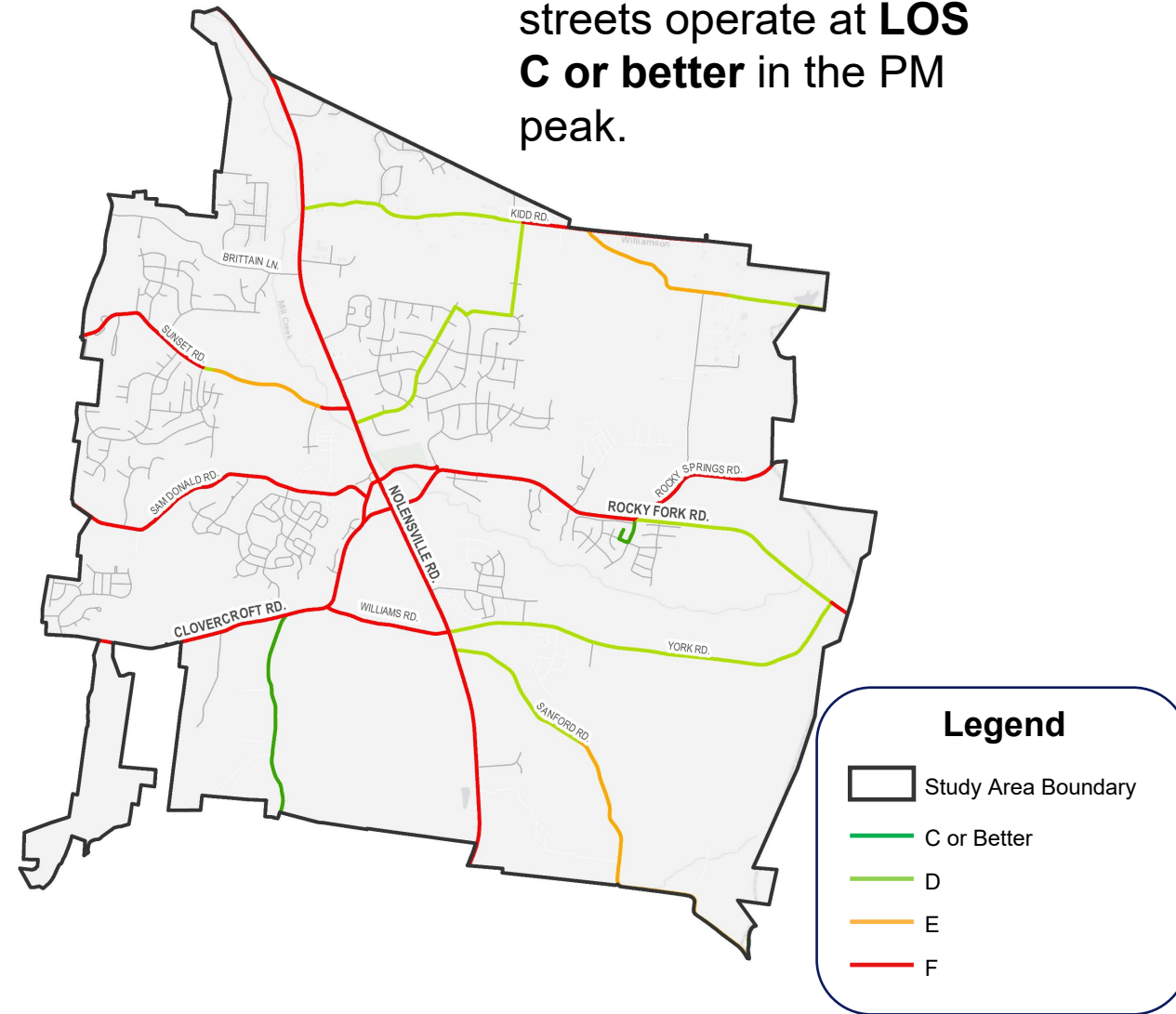


Streets – Level of Service (2017 and 2045 PM)

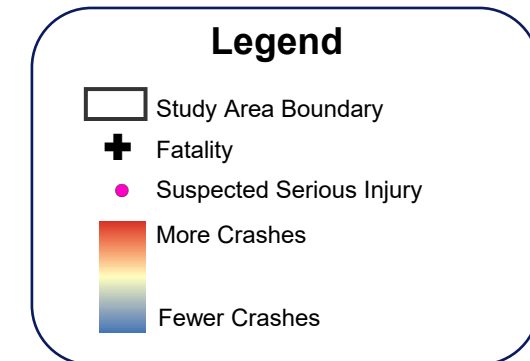
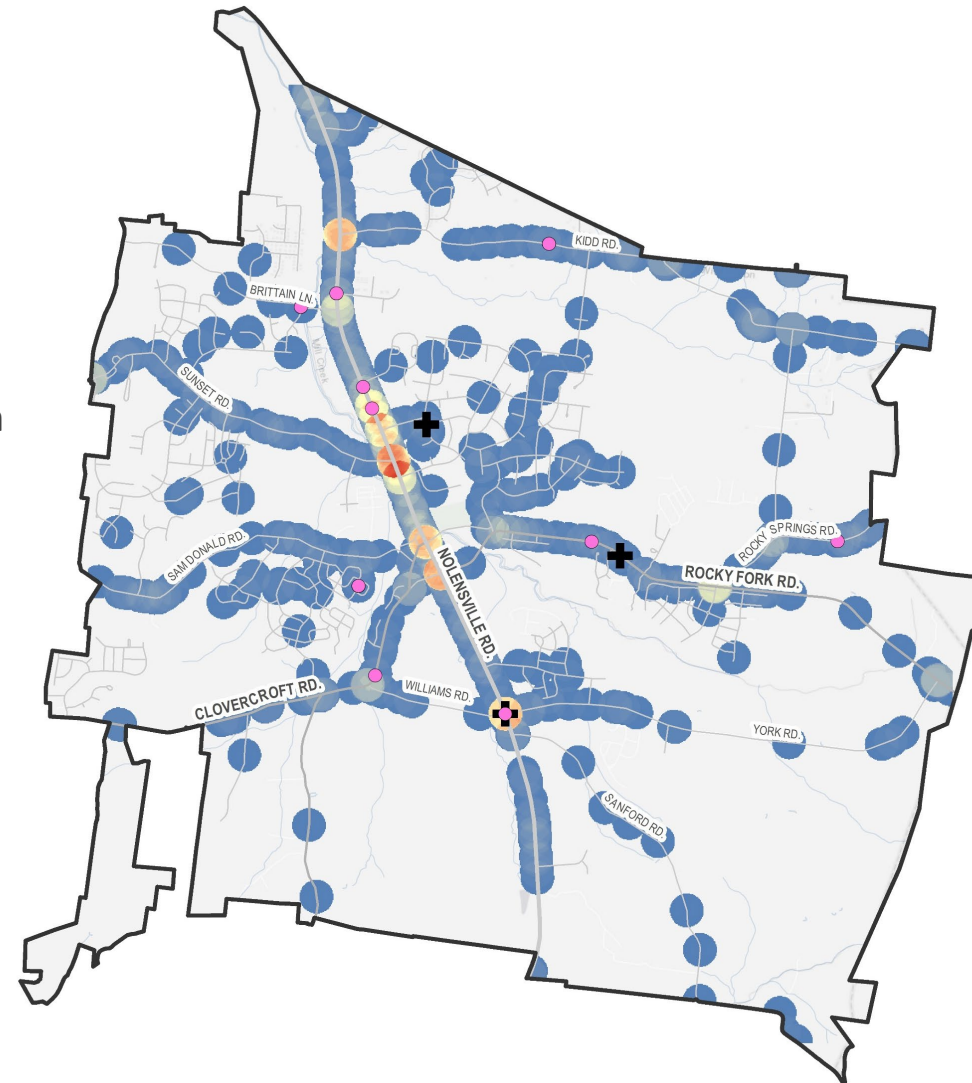
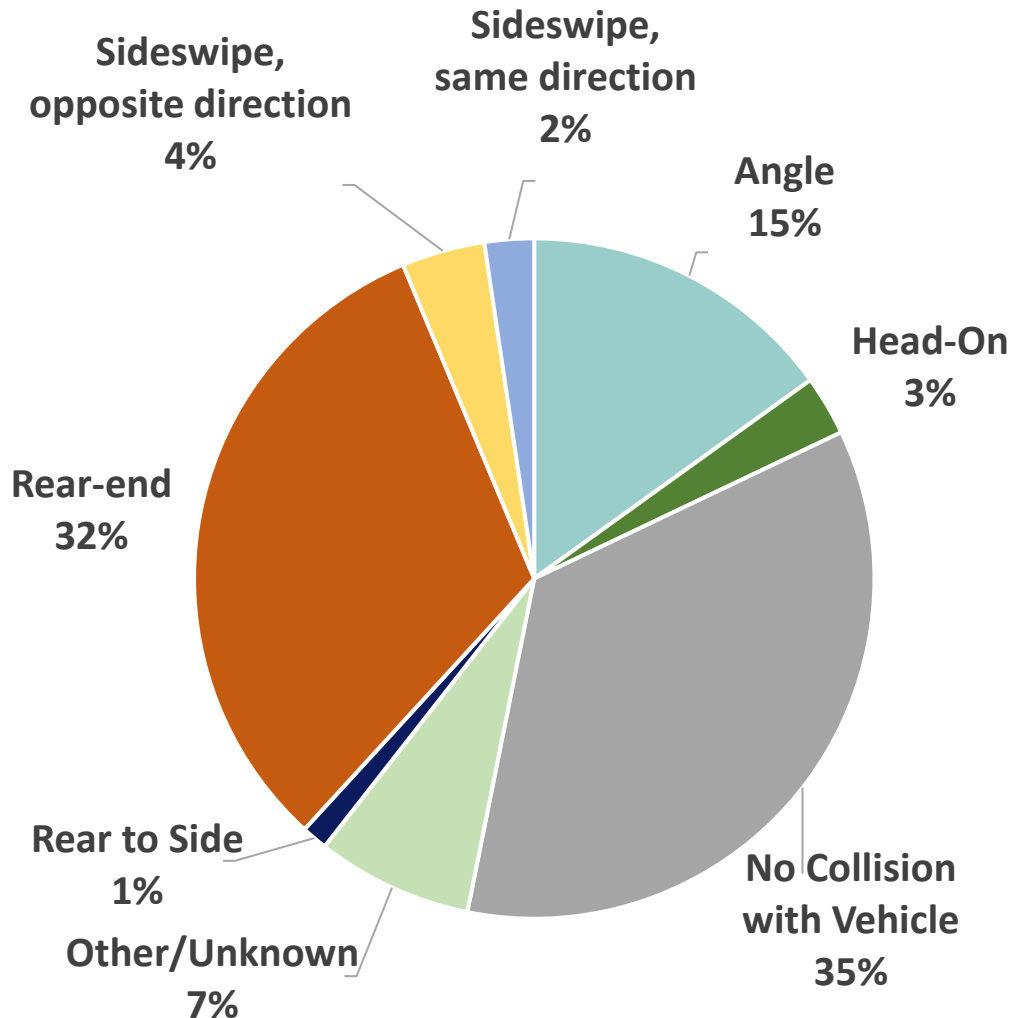
In 2017, **39%** of major streets operate at **LOS C or better** in the PM peak.



In 2045, **9%** of major streets operate at **LOS C or better** in the PM peak.



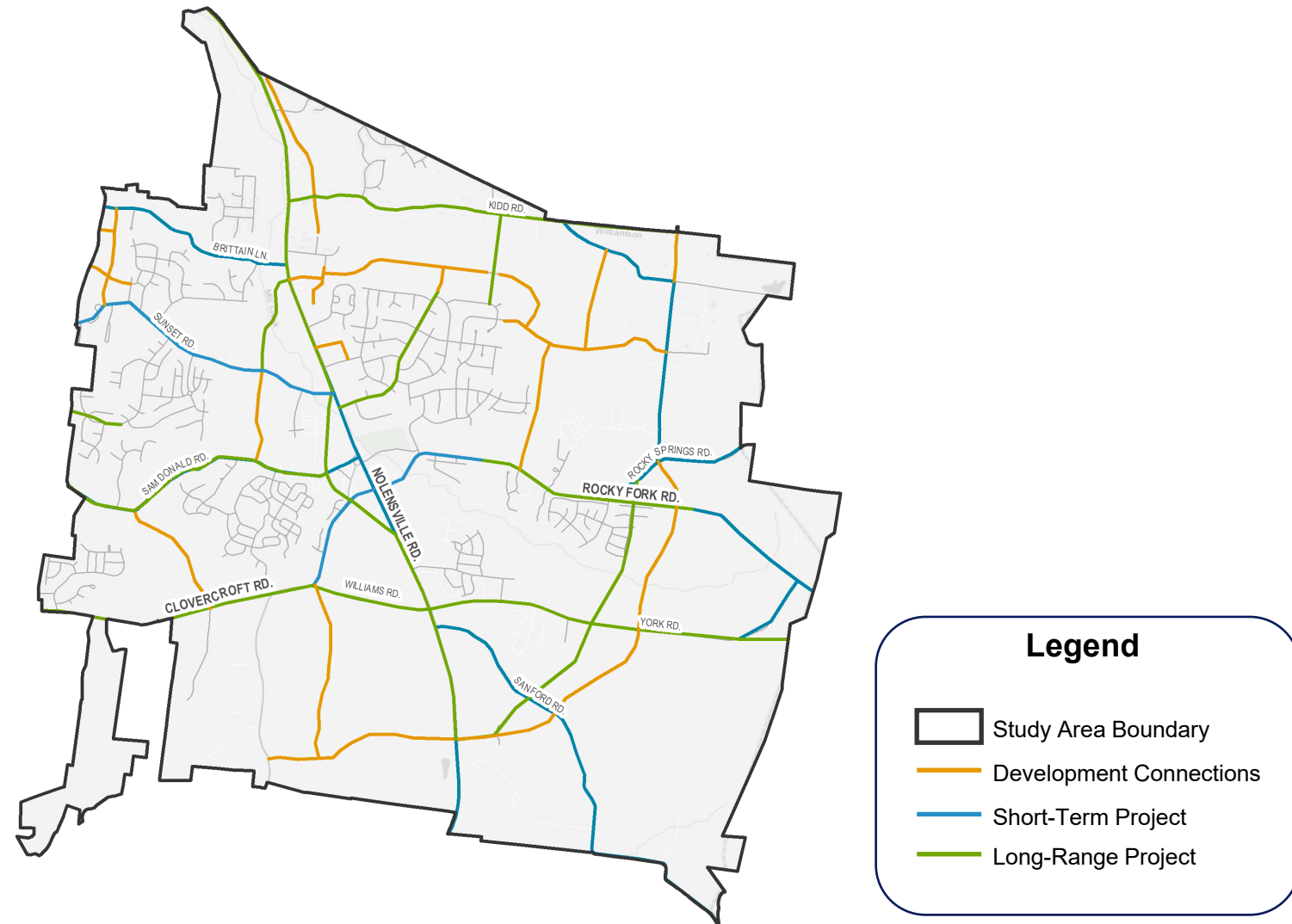
Streets – Crashes (2016 – 2020)



Previously Identified Projects

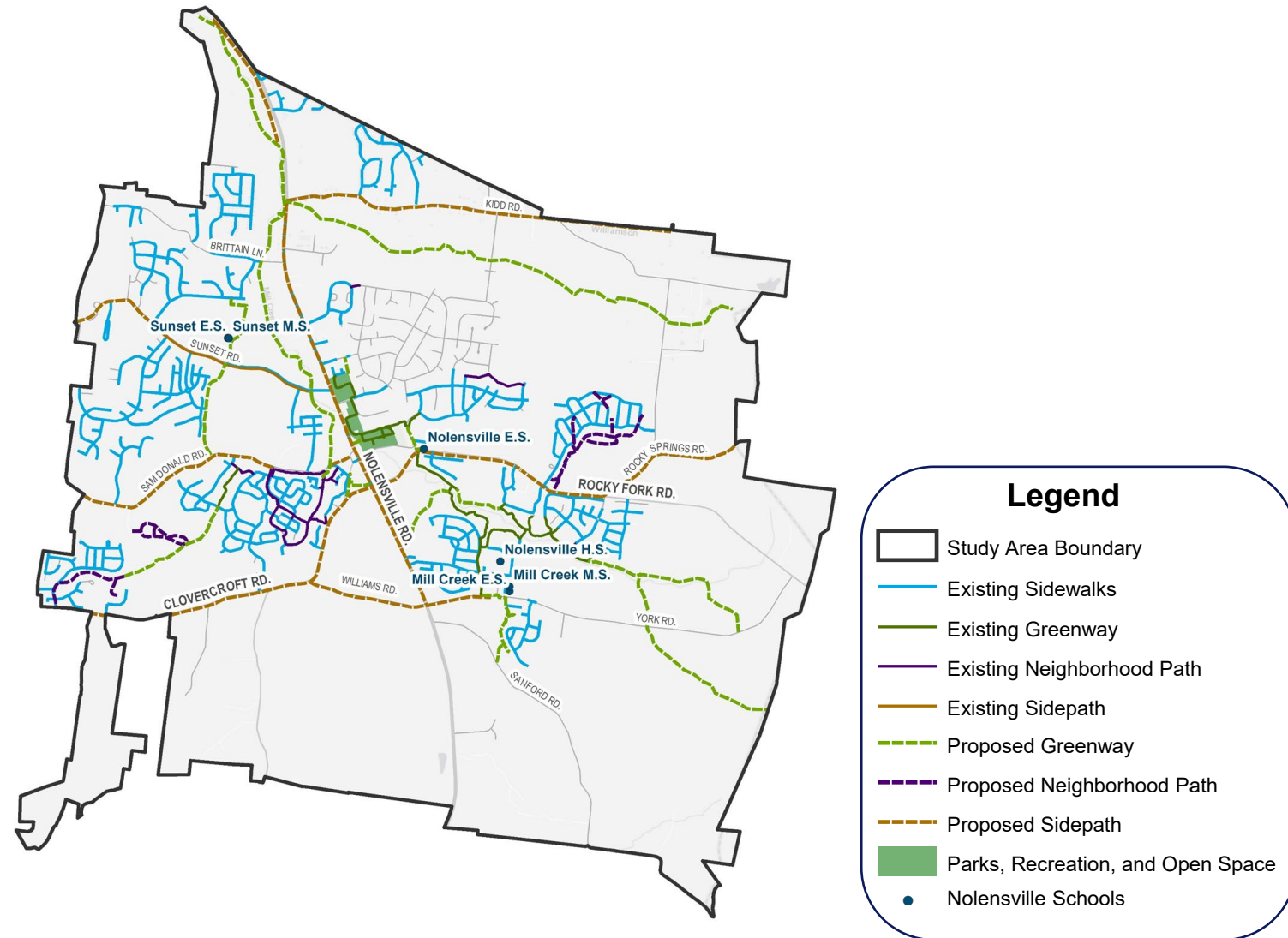
Projects in the previous MTP include:

- New streets
- Street upgrades
- Intersection improvements



Non-Motorized Facilities

- The study area includes:
 - 68 miles of sidewalks
 - 5 miles of greenways
 - 3 miles of neighborhood paths
 - 1 mile of sidepaths
- There are over 30 miles of bicycle and pedestrian facilities proposed in the study area.



Next Steps

STUDY SCHEDULE



Visit the study webpage at:

<https://kci.mysocialpinpoint.com/nolensville-mtp-update>

