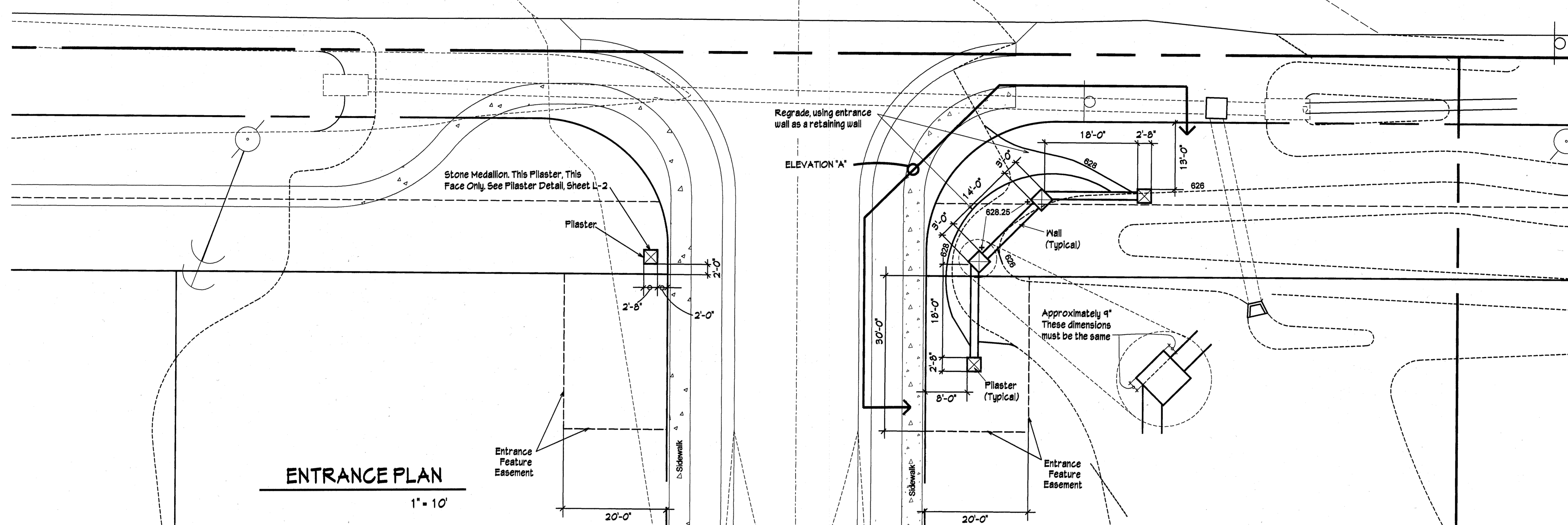


DEVELOPER:
Yazdian Construction Co., Inc.
CONTACT: FRED YAZDIAN

Rocky Fork Road

626



ENTRANCE PLAN

1" = 10'

Entrance Feature Easement

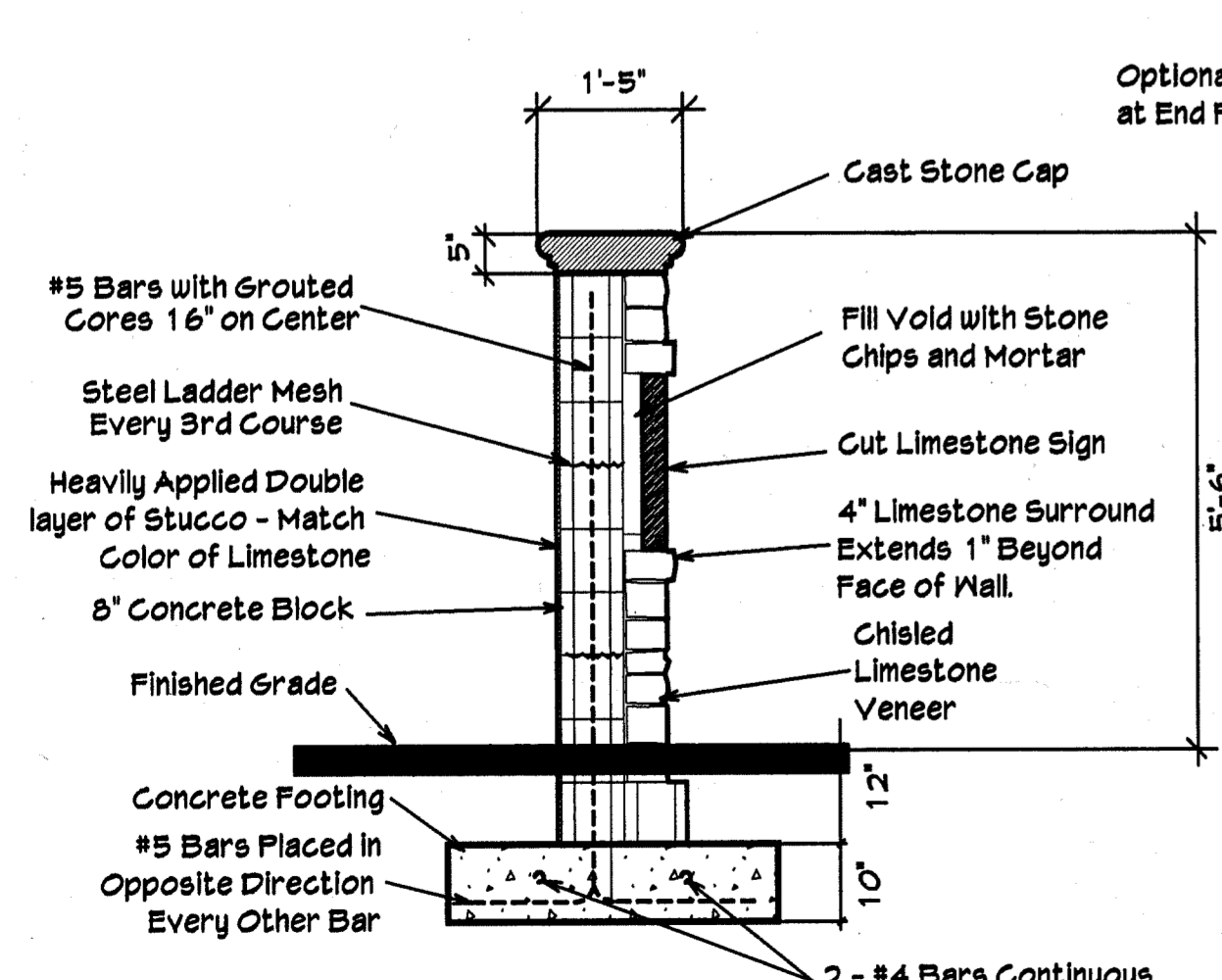
20'-0"

ELEVATION "A"

Approximately 9"
These dimensions
must be the same

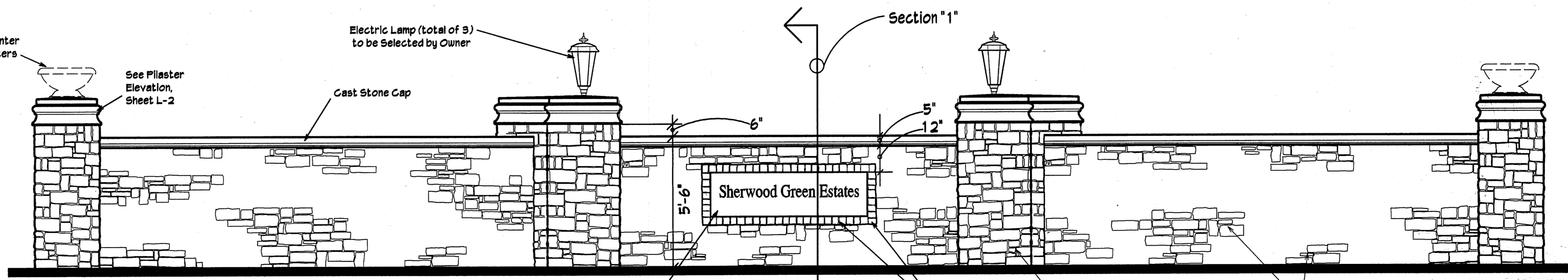
Entrance Feature Easement

20'-0"



SECTION "1"

1/2" = 1'-0"



ELEVATION "A"

3/8" = 1'-0"

- #5 Bars with Grouted Cores 16" on Center
- Steel Ladder Mesh Every 3rd Course
- Heavily Applied Double layer of Stucco - Match Color of Limestone
- 8" Concrete Block
- Finished Grade
- Concrete Footing
- #5 Bars Placed in Opposite Direction Every Other Bar
- 2 - #4 Bars Continuous
- Cast Stone Cap
- Fill Void with Stone Chips and Mortar
- Cut Limestone Sign
- 4" Limestone Surround Extends 1" Beyond Face of Wall
- Chisled Limestone Veneer

Electric Lamp (Total of 3) to be Selected by Owner

Optional Planter at End Pilasters

See Plaster Elevation, Sheet L-2

Cast Stone Cap

Cut Limestone Sign 6'-6" x 1'-10" x 3" Thick with Sandblasted and Painted Letters and Logo. Logo Design Will be Provided by Owner.

Section "1"

5"

12"

6"

5'-6"

Plaster

4" Limestone Surround Extending 1" From Stone Wall - Very Important to Sign/Wall Aesthetics.

Chisled Limestone Veneer With Mortared Joints 1/4" - 1/2" Wide

ENTRANCE PLAN

Yazdian Construction Co., Inc
DEVELOPER

Anderson, Deik, Epps & Associates Inc.
ENGINEERING/PLANNING/SURVEYING
818 GRASSMERE PARK DRIVE / SUITE 4
NASHVILLE, TENNESSEE 37211



Sherwood Green Estates

TOWN OF NOLENSVILLE, TENNESSEE

ENTRANCE PLAN

DATE : 05-30-13

Job Numbers:
09-106 and 113011017

L-1 SHEET 1 OF 3