

COVID-19 (Coronavirus) Guidance for Local Businesses

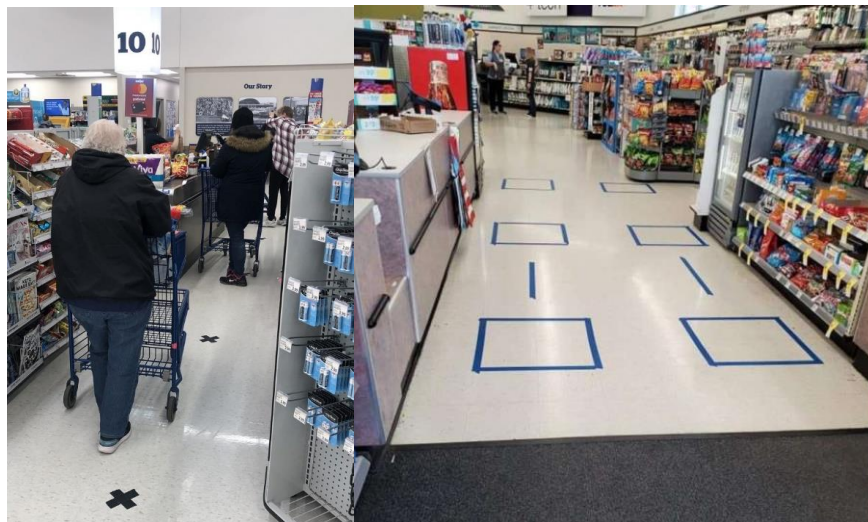
The Pittsburg County Emergency Management Center is encouraging the essential businesses in our area to take steps to follow the guidance from the Centers for Disease Control and Prevention (CDC), protect your employees and customers, and build confidence in others to patronize your business during the COVID-19 pandemic.

Here are a few easy, but important, steps you can take:

- Encourage customers to come in alone. Put up signage or send out messages to leave the family at home and only have one member of the household enter your business at a time, if possible. Here's an example from Walmart:



- Social distance at the register and other points of your store where people come together. You can easily use tape, markers, or barriers to specifically show the recommended 6 feet of distance between customers and/or employees. You can also use this opportunity to put out important and encouraging messages about practicing good hygiene, protecting the vulnerable, and social distancing. Encouraging messages could include how we can all do our part to stop the spread, COVID-19 mental health resources from the Oklahoma State Department of Health, and that we are in this together.

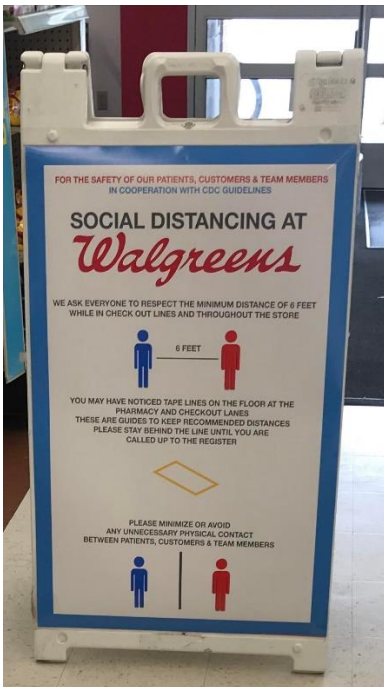


- Put up signage to encourage people in your business to keep a distance while waiting or shopping inside.

If you are running a restaurant for take-out service, designate areas 6 feet apart for people to stand or sit while you prepare their order so they do not gather while waiting.



For essential retail businesses, encourage customers inside to keep 6 feet away from others while shopping. Here's an example from Walgreens:



- Disinfect and clean, then do it again. The CDC has a lot of guidance on handwashing and disinfection you can find on their website at <https://www.cdc.gov/coronavirus> or the Oklahoma State Department of Health at <https://coronavirus.health.ok.gov/>.
- Do not allow sick employees to report to work. Consider checking temperatures and asking basic questions about wellbeing and travel as they report to work.
- Put up educational signage in areas where people are waiting or standing in line. It's a great opportunity to help your local, state, and federal leaders educate the public about this pandemic and what they can do to help slow the spread and flatten the curve. You can find many materials and ready-to-print signs from the CDC or the Oklahoma State Department of Health on their websites and social media.

Once you have these steps in place, promote them using social media, customer outreach methods, and other ways to help people know what you are doing and encourage other businesses to take similar precautions.

We're all in this together. If any of the agencies responding through the Emergency Operations Center such as the Pittsburg County Health Department, McAlester Regional Health Center, City of McAlester, Pittsburg County, and numerous law enforcement and emergency medical services – can assist or provide guidance, please do not hesitate to call us at 918-423-5655.