



Parks Master Plan

Park Board Members

Jeff Napier, President

Jane Davis

Adam Kwiecinski

Janie Bicknell

Howard Harris

Lindsay Mescher

Susan Galise

K.C. Stallings

Scott Nash

Barb Leitschuh

What will the Parks Master Plan be used for?

- To reflect community feedback
- To communicate the importance of Parks to our residents and businesses
- To guide budget decisions
- To support grant applications



Moving forward we need to remember:

- This is a living document (Miller Park and Bike Park Examples)
- Any additions to our Parks need to be maintainable

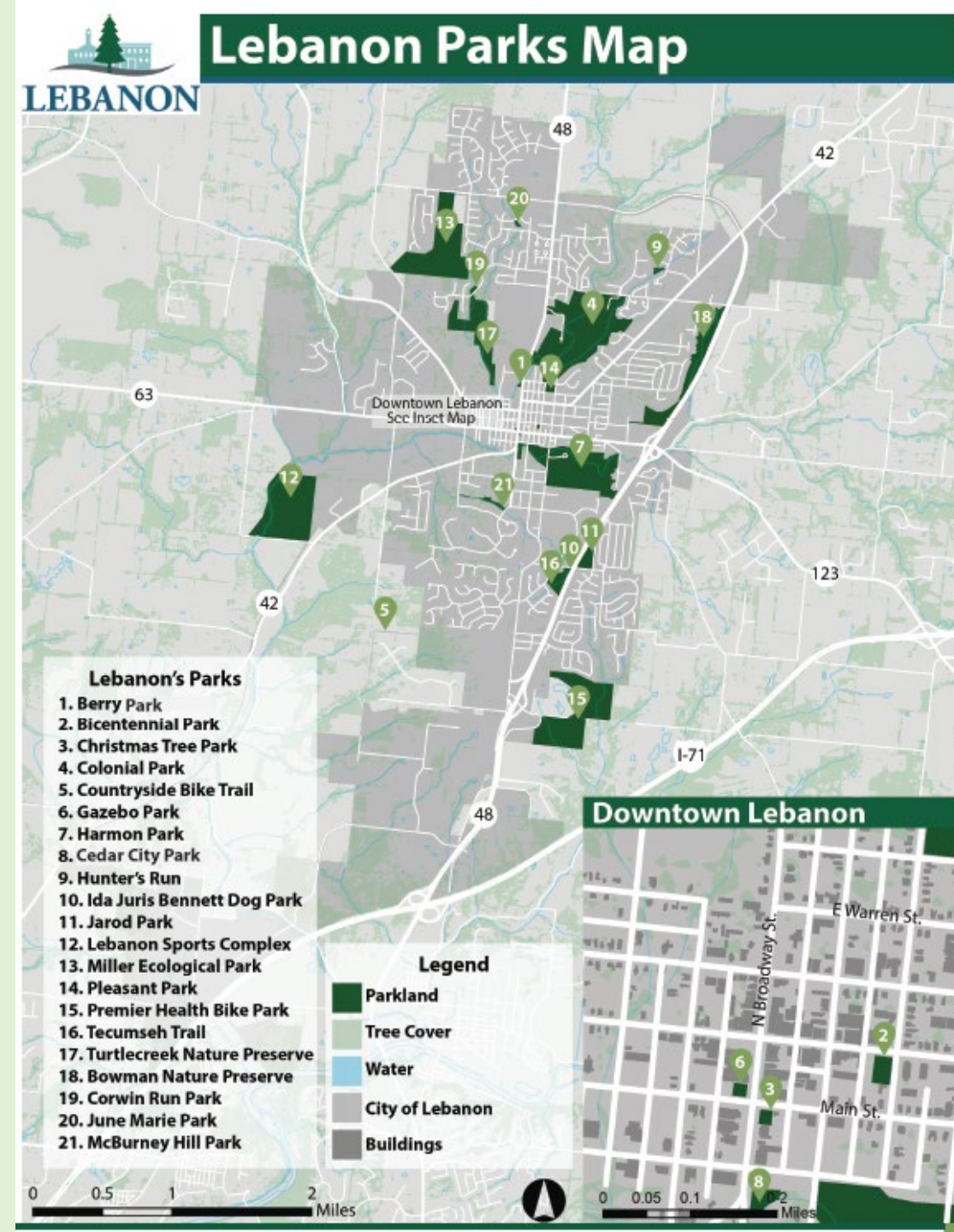
Outline

- Parks by the Numbers
- Survey Insights
- Recommendations by Park
- 5 Year Priority Items



Parks By The Numbers

- 17 unique parks
- Over 600 acres
- 10 Baseball/Softball Fields
- Over 30 Soccer Fields
- 9 Playgrounds
- 12 Shelters
- 8.2 miles of Bike Trail and growing
- 12 miles of Hiking/Walking Trails



Survey Insights

- 546 Respondents!!!
- 36% of respondents don't use parks because they don't know where parks are or what the park offers

Respondents Favorite Activities

Enjoy the Outdoors/Nature	25%
Walk or Bike	20%
Family Activities	19%
Picnic/Leisure Activities	14%
Meet Friends	7%
Play Sports	7%
Attend Special Events	4%
Use a Park Facility	4%

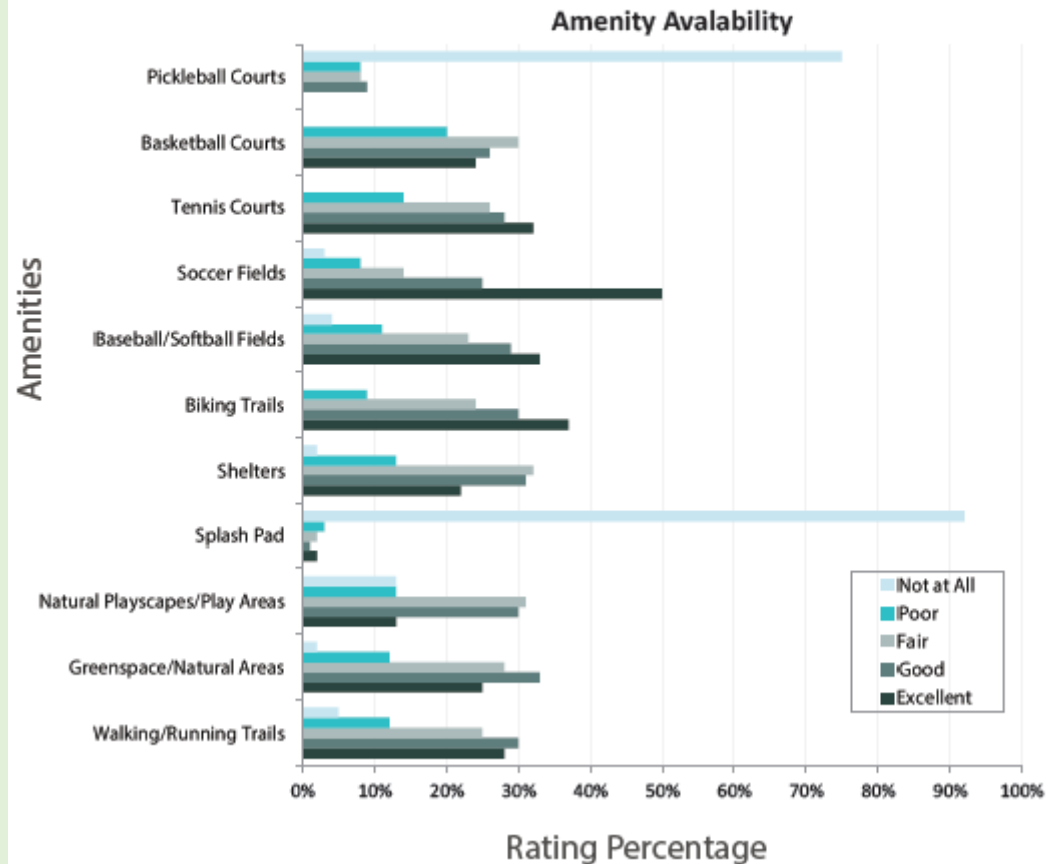
Desired Programs

Special Events	27%
Outdoor Programs	18%
Fitness Classes	14%
Arts	12%
Drop-In Activities	12%
General Interest Classes	9%
Sports	8%

Survey Insights- Amenities

If funding were available...

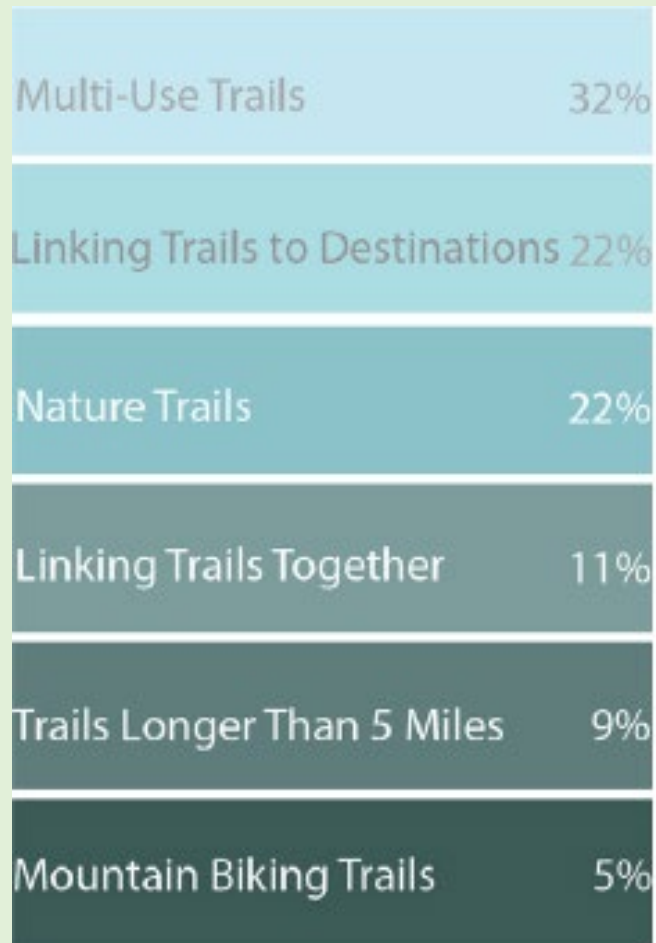
Amenities Respondents Desire in Parks and How Well They Feel The City Has Provided Them



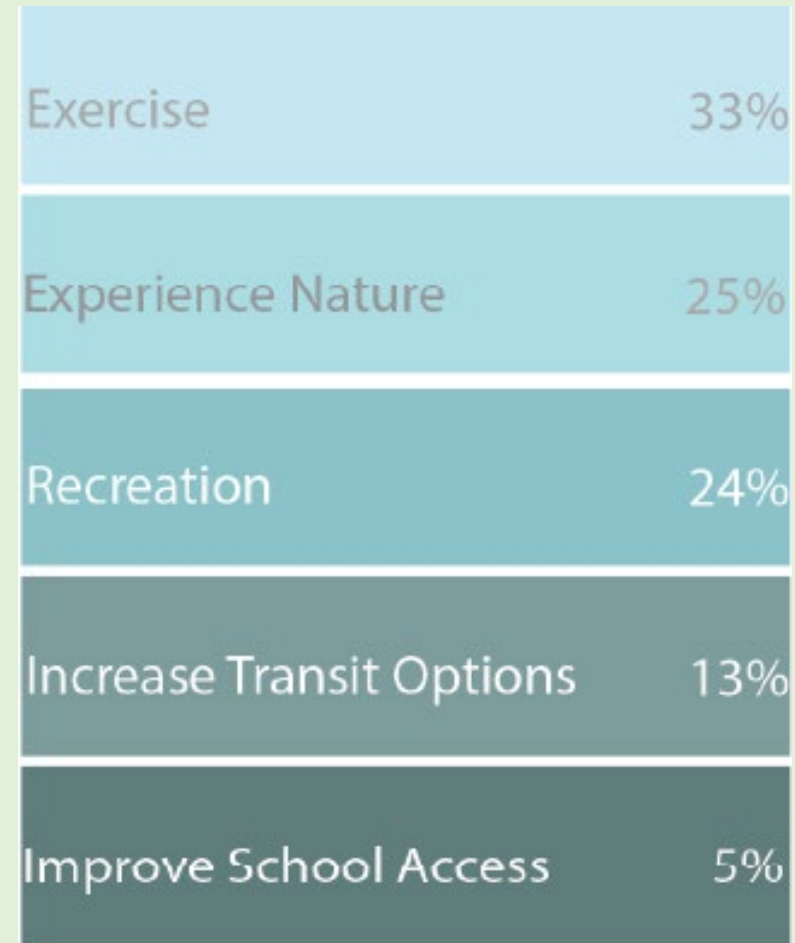
Water Playgrounds	37%
Citywide Trail System	16%
Indoor Rec/Senior Center	13%
Restrooms	10%
Natural Areas/Green Space	8%
Community Gardens	7%
Picnic shelters	4%
Sports Fields	3%
Outdoor Courts	2%

Survey Insights- Trails

Type of Trails Desired



Why Trails Should be Built



Recommendation by Park

- Colonial Park
- Harmon Park
- Miller Ecological Park
- Lebanon Sports Complex
- Premier Health Bike Park
- Tecumseh Trail Park
- Jarod Park
- Bicentennial Park
- Pleasant Park



Colonial Park

- Enhancements to vehicular and pedestrian circulation throughout to unify the currently segmented park
- New roads to connect North to West, West to East, and South to East
- New pedestrian access point from North Broadway to provide visibility to the retention pond
- Enhance festival staging area and add amphitheater in West
- Add paths throughout the park to offer a variety of connections between public spaces, differing trail lengths, and neighborhood connections



Harmon Park

- New parking lot at the southern end of Mound St at the start of the Disc Golf Course
- Install a neighborhood playground area adjacent to Roberts Field
- Install updated playground equipment with handicap assessable play features
- Install Skatepark



Legend

- ★ Vehicular access
- Existing Path



Miller Ecological Park

- Enhancements for the trails and walkways by improving drainage
- Add signage along with trail improvements especially in the southern sections of the park
- Build restrooms and improve existing shelters
- Add parking off Huntley Court



Lebanon Sports Complex

- Expand parking
- Improve circulation with a loop road
- Add paved walking path around perimeter and across the center fields
- Add a two level shelter and overlook in the center of the fields
- Provide access to park from Glosser Road

Legend

- ★ Vehicular access
- Existing Path
- Proposed Path




Premier Health Bike Park

- Extend Mountain Bike Trails to the northern portions of park
- Add additional parking



Legend

- ★ Vehicular access
- Existing Track
- Proposed Two-Way Track
- Proposed One-Way Track



Tecumseh Trail Park & Ida Juris Bennett Dog Park

- Relocate and enhance the playground facilities- completed
- Add a sizable shelter near the new playground
- Add a new entrance to Dog Park
- Add new trails and new trail markers
- Establish no mow areas
- Add a parking lot along Navaho Dr



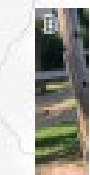
Jarod Park

- Enhance the playground facilities
- Add Nature Playscape
- Add new trees to park and the sidewalk along Covenant Way
- Establish non mow areas
- Establish a parking lot along Covenant Way



LEBANON

historic charm. reimagined.



Bicentennial Park

- Establish an entrance for the park from Mulberry St.
 - Establish a splash pad with a small stage
 - Add benches and swing benches on the splash pad sides
 - Add a fence and pillars along Cherry and Mulberry St
 - Enhance the existing parking lot
 - Add landscaping beds and trees to screen the parking lot
 - Add restrooms
- *When the City is ready to consider installing a splash pad, re-evaluate for best location and desired features of the community.



Pleasant Park

- Enhance the existing basketball courts and playground
- Upgrade the existing shelter
- Establish another entrance with a restroom to the park on the corner of New St and N. Cherry St
- Add paths to connect the park's entrances with all different amenities
- Add new trees by the playgrounds and paths
- Add benches on the east and west sides of the park



742

754

Proposed Restroom

Existing Shelter

Existing Playground

752

Existing Playground

744

760

758

750

762



5 Year Priority Items- General

- Implement the LTTI plan- establish bicycling network between downtown Lebanon and other destinations in Turtlecreek Twp
- Ensure the future park planning includes:
 - 1) Year-round use
 - 2) Amenities in highly visible areas
 - 3) Highlight natural features, enhance the park ecosystems
 - 4) Improve aesthetics and enhance user experience
 - 5) Ensure neighborhood ownership of parks
- Establish a Parks & Rec Reserve Fund

5 Year Priority Items- Park Specific

- Miller Ecological Park- Install restrooms, re-locate amphitheater, and determine more ecological landscape areas
- Harmon Park- Update existing playground
- Lebanon Sports Complex- Pave existing parking areas and expand parking
- Bicentennial Park- Add a central hub with public restrooms
- Bicentennial Park- Establish a splash pad with a small stage*
- Colonial Park- Enhance the festival staging area near the N Broadway access point with an amphitheater
- Complete Skatepark evaluation

Next Steps

- Staff is recommending formal adoption of the 2020 Parks Master Plan
- Park Board approved this at their March 2021 meeting



Thank you!

