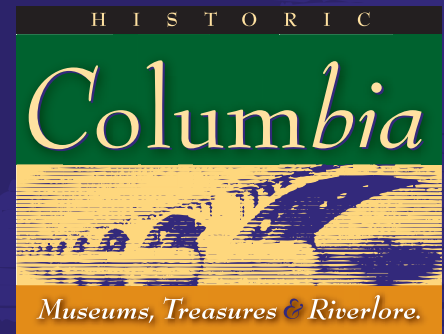


# The Columbia Connection



## WHAT IT MEANS TO BE "GREEN."

As most are aware, on June 26, 2020 Lancaster County moved to the green phase of PA's reopening from the COVID-19 pandemic.

The green phase eases most restrictions, but some remain. As we continue to move forward, we as a community need to remember this pandemic is not over. With more freedom to return to our daily life comes more individual responsibility to approach daily life's tasks with caution. The staff and elected officials of Columbia Borough are anxious to see our community move forward responsibly and successfully but we all need to have the same goal; to reopen in a way that keeps us moving forward and not to return to more restrictions. Columbia Borough Council is committed to this community and making sure that our residents and businesses successfully and carefully reopen. On June 9th, Council passed

Resolution 20-14 which allows eating establishment to operate sidewalk service. Permits must be obtained, and safety guidelines must be abided by, but this will allow some businesses in the Borough to service more customers. Some of the social restrictions that exist in the green phase are:

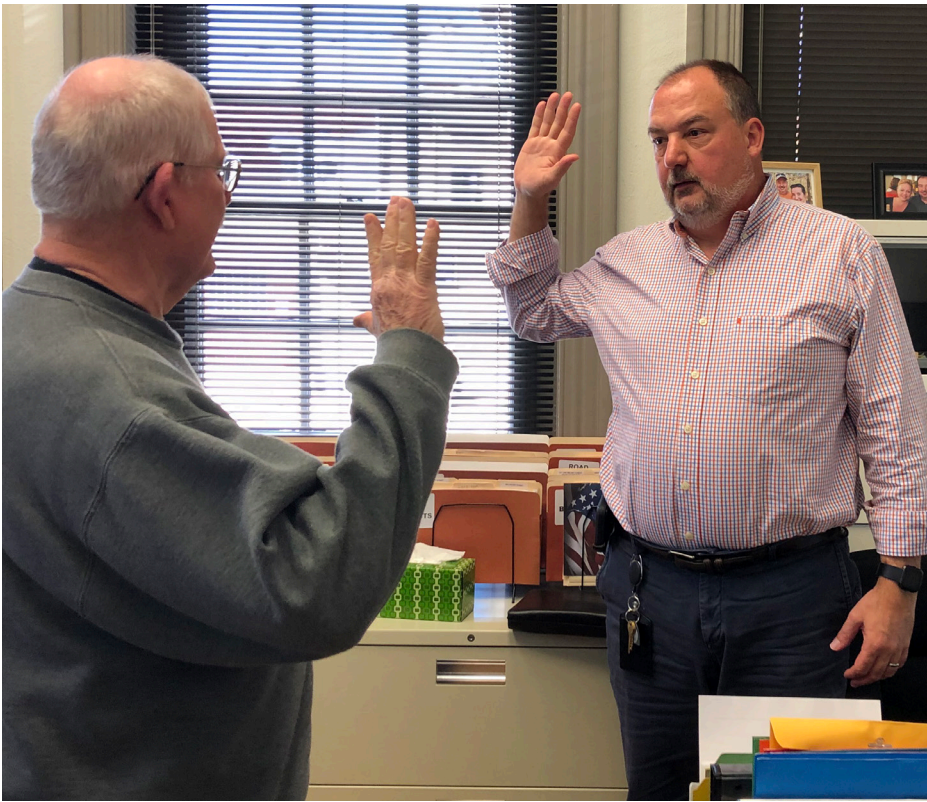
- Large gatherings restricted to 250
- Masks required when entering a business
- Restaurants and bars open at 50% occupancy
- Hair salons and barbershops open at 50% occupancy and by appointment only

Borough parks/playgrounds continue to be open. Please be aware that the park/playground equipment is not sanitized, and we remind you to social distance, use hand sanitizer and say at home if you or the kiddos are under the weather.

A mask is required to enter the Borough offices. Remember, you can utilize the drop box or pay over the phone. The Borough staff appreciates your willingness to help keep everyone safe and try to ensure business will not be interrupted again.

## CONTENTS

- 1 What it Means to be "Green"
- 2 2020 Leadership of Columbia
- 3 Census  
2020 Taxes  
Movies Under the Stars  
Budget Update
- 4 Earth Day Every Day  
Ordinance 921
- 5 Bridging the Susquehanna
- 6 Managing Stormwater  
Shade Trees
- 7 Spotted Lanternfly
- 8 Borough Monthly Meetings  
VTA  
Borough Officials



## 2020 LEADERSHIP OF COLUMBIA

Hello Fellow Citizens!

There has been a good bit of change in the leadership of Columbia in the last few months and it only makes sense to take the time to introduce the new team. As of January 6th, there are 4 new members of Borough Council. Eric Kauffman, Sharon Lintner, Howard Stevens, and Heather Zink joined Todd Burgard, Fran FitzGerald, and Pam Williams at the table. We are all committed to serving the taxpayers to the best of our ability.

There is another new face in the leadership team; Mark Stivers has come on board as the Borough Manager. He replaced Rebecca Denlinger following her resignation. Council interviewed many qualified candidates and felt that Mark was the best fit for our town. We have no doubt his credentials and personality will be an asset for our Borough.

As the new leadership team, we look forward to being able to complete some of the projects that have been started but also reprioritizing some others to ensure fiscal responsibility. While the recent pandemic has thrown a few curve balls our way, we are committed to reigning in the uncontrolled spending of the past and getting the budget balanced. We are also committed to a higher level of transparency and have been working on plans to increase citizen participation during the meetings as well as using technology to allow for a better streaming experience for those watching from home.

**Again, every one of us is committed to doing the best job we can for the Borough of Columbia. We all encourage you to reach out if there is anything you would like to discuss or if there is a problem you need our help with.**

## JUNIOR COUNCIL PROGRAM

The Junior Council Person Program provides youth in our community with an opportunity to get engaged in borough government and develop leadership skills. It also allows for borough officials to serve as mentors to students who will be future leaders in their communities. Columbia Borough Council adopted Resolution 2018-12, establishing a resolution participating in the Pennsylvania State Association of Boroughs Junior Council Person Program. The Columbia Junior Council Person must be a borough resident and a high school or college student. The term is the student's school year. Tristan J. Anderson is the current junior council person. He just graduated from Columbia High School. In the Fall, he will attend Mount Saint Mary's University and study Philosophy, Politics and Economics. He attended borough council meetings regularly and volunteered in the office during the week. We here at the borough office suspect we are going to hear a lot of great things from Tristan. He is awesome and we were lucky to work with him. Good luck Tristan!





# CENSUS

**There is a lot of misinformation when it comes to the census.** People are scared that the

information they divulge will be used negatively against them and their family. People hesitate to complete the census or answer the door when a census taker knocks. Or many think it is a hassle and put it off, never completing it. Unfortunately, that can have a negative impact on our community. The results of the Census assist in determining how federal money is channeled into communities for the next ten years! So many aspects of our lives are affected by how our population is counted. Think of your commute. Census results influence highway planning, road construction and public transportation. Think of education, not just elementary schools. Census results affect funding for Head Start as well as adult education. Think of health care. Census results affect Medicaid, Medicare, State Children's health insurance and programs for concerns like substance abuse. Think of recreation. Census results affect programs to restore wildlife and land conservation. Think of natural disasters. Census results affect how funding is distributed when our communities experience natural disasters like weather and health disasters.

**The truth is, that a proper census count affects our lives in so many ways, every day. To ensure our community receives all the funds and representation it deserves, we need everyone in our community to be counted. Please complete the 2020 Census. Not just because it is the law. Because our community needs you. Lost the mailer you received in the mail? Go to [www.my2020census.gov](http://www.my2020census.gov) for information. Thank you!**

United States®  
**Census  
2020**

## 2020 TAXES

The 2020 Municipal and County tax bills can be paid at the Borough Office located at 308 Locust Street using the Drop Box. All checks should be made payable to "Columbia Borough" the discount period ended on April 30, 2020. The base amount will be collected until November 30, 2020. The 10% penalty will be applied to all tax bills collected on and after December 1, 2020.

Unpaid 2020 County-Municipal taxes must be paid or postmarked by December 31st. If you pay after December 15th, you must pay by certified check, cash, credit card or money order. Personal checks will not be accepted. After December 31st, all tax invoices are sent to the Lancaster County Tax Collection Bureau and are considered delinquent. Contact the Borough Office with any questions.

**There is a 2.79% or a \$1.50 upcharge, whichever is greater, to all credit card payments. This cost is the responsibility of the credit card user.**

If you are paying by mail

- Please use the bill stub and envelope included with your bill
- The US postmark is considered the date paid, no exceptions
- If you want a receipt, include a self-addressed, stamped envelope

## 2020 MOVIES UNDER THE STARS

Columbia, PA



Friday, June 19th  
Locust Street Park



Friday, July 17th  
Locust Street Park



Friday, August 21st  
Locust Street Park



Friday, Sep. 18th  
Columbia Crossing

**FREE Family Friendly Fun! Movies start at Dusk!**  
**Bring your lawn chairs or blankets! FREE popcorn and water!**

**Like us on Facebook - Movies Under the Stars - for updates!**

*Brought to you by the Columbia Lions Club*

## BUDGET UPDATE

Sager, Swisher & Co LLP conducted the 2019 Borough audit in March 2020. Accountants gathered information and worked with the Finance Department.

Budget meetings were advertised and will take place July 16, 2020, September 17, 2020, October 15, 2020, November 19, 2020 and December 3, 2020. Residents are encouraged to attend the meetings and ask questions. If you are unable to attend and particular meeting and have a question, please reach out to Borough Council President, Heather Zink, at [hzink@columbiapa.net](mailto:hzink@columbiapa.net). Meetings will be live streamed.

# EARTH DAY EVERY DAY

Earth Day was celebrated in April. Unfortunately, with the Stay-at-home order, celebrations were canceled. However, we are lucky to live in a beautiful borough and can enjoy all of Earth's beauty. There are several things you can do to honor the Earth. You can ride your bike into town to visit a restaurant or store (a second hand store!), plant a tree, take out a book from the library, invest in energy efficient light bulbs, pick up trash, or take a nature hike on our awesome trail. Better yet, ride your bike to town by way of the library, pick up litter while cruising down the trail and end the day at an eating establishment!

## APRIL SHOWERS BRING MAY FLOWERS

Warmer weather makes us want to spend more time outdoors. With a few simple reminders, we can make our Borough more enjoyable for everyone

### ➔ DO

- Make sure grass and weeds grow no higher than eleven inches.
- Place trash in approved and covered containers.
- Keep pets on leashes, when walking, and clean up and dispose of waste immediately.
- Take advantage of the Borough's Yard Waste Drop Off at the Borough Farm the second Saturday of the month 8:00 AM to 12:00 PM.

### ➔ DON'T

- Allow trash, lawn clippings and tree branches to accumulate on your property.
- Let pet waste in your yard.

## ARBOR DAY 2021

The Columbia Arbor Day Celebration, scheduled for Friday, April 24, 2020 was canceled. All awards and memorial recognitions that were to be presented at the 2020 ceremony will be included in the 2021 Arbor Day celebration to be held on Friday, April 30, 2021 at the Locust Street Park.

Have you heard?  
Recycling has changed in Lancaster County.



JUST FOCUS ON THE **BIG 4** & PLACE ONLY THESE ITEMS IN YOUR BIN.

1



CORRUGATED  
CARDBOARD

*Flattened*

2



PLASTIC BOTTLES  
& JUGS WITH NECKS

3



METAL FOOD &  
BEVERAGE CANS

4



GLASS JARS  
& BOTTLES

*Emptied, Rinsed, & Lids Removed*

All other items do not belong in your recycling bin.



It's okay to throw *everything else* away. It will be turned into energy.

Lancaster County has an advanced waste-to-energy process that converts these materials into renewable energy, powering local homes and businesses and helping to reduce our reliance on non-renewable sources of energy. So, when in doubt, throw it out.

[recyclerightlancaster.org](http://recyclerightlancaster.org)



## ORDINANCE 921

On June 23, 2020, Borough Council voted to amend the Codes rental registration ordinance. Previously, rental registrations took place July 1st through June 30th. Ordinance 921 changes the time schedule to October 1st through September 30th.

The purpose of rental registrations is to protect the health and well-being of Columbia Borough citizens that occupy rental units. Anticipating an inspection encourages owners and occupants to maintain and improve the quality of rental housing in the community. Once a property is in the borough system, it is tracked and therefore inspected every three years. If the property owner does not comply with all Code mandates, the residential rental license can be revoked. For more information, updated rental registration forms and new tenant forms can be found at the Borough's website [www.columbiapa.net](http://www.columbiapa.net)



# BRIDGING THE SUSQUEHANNA

In the early 1800s, it was common for over 150 wagons to descend upon Columbia, Pennsylvania, sitting and awaiting their turn to be ferried across the Susquehanna. A bridge connecting York and Lancaster County at Columbia was seen as an essential infrastructure improvement, vital to expansion into central Pennsylvania. Without a bridge, residents would be forced to resort back to a seasonal ferry for transportation. The only other bridges along the Lower Susquehanna were miles away at Harrisburg and Port Deposit, Maryland, both of which were opened in 1817. Six bridges have connected our region at Columbia: Two were destroyed by mother nature, two more destroyed by man, and two remain standing.

## FIRST BRIDGE (1814 TO 1832)

The first bridge across the Susquehanna was built between 1812 and 1814. The project cost \$231,771 financed by the Columbia Bank and Bridge Company. It was located ¼ mile north of the Veterans Memorial Bridge on 53 piers not visible today. Thick ice hardened in the winter of 1832. A spring thaw came quickly in February causing ice to break up and flow down the river. The ice jammed up south of Columbia creating a natural dam. Water and ice rose up and lifted the bridge off the piers.

## SECOND BRIDGE (1834 TO 1863)

The second bridge was constructed between

1832 and 1834. It was financed by the Columbia Banks and Bridge Company at a cost of \$157,300. It sat on the 27 piers that still stand just north of the Veterans Memorial Bridge. Along the outside, two tow paths for moving canal boats were added in 1840. A double railroad track was added in 1850. This bridge was burned in June 1863 to prevent Confederate troops from crossing the Susquehanna River. We will feature that event in another RiverRoots blog.

## THIRD BRIDGE (1869 TO 1896)

The third was primarily a wooden covered bridge but had two spans of iron trusses. These spans were meant to be fire-resistant. It sat on the same pier as the second bridge and was built in 1868–1869. The Columbia Bridge Company financed the \$400,000 cost. In September 1896, the Cedar Keys Hurricane which devastated much of the East Coast hit Columbia. It was so powerful that it swept the bridge from the piers. Some pieces landed near iron furnaces south of Marietta.

## FOURTH BRIDGE (1897 TO 1963)

The fourth bridge is usually referred to as the Pennsylvania Railroad Bridge. It was constructed in less than a month in 1896 by the railroad company using the same piers as the second and third bridge. Early designs of this bridge called for two decks: lower for rail traffic and upper for all other traffic. It was never added despite regular traffic jams when trains came through.

When rail cars stopped traveling between York and Lancaster in 1958, the bridge was closed. It was dismantled in 1962.

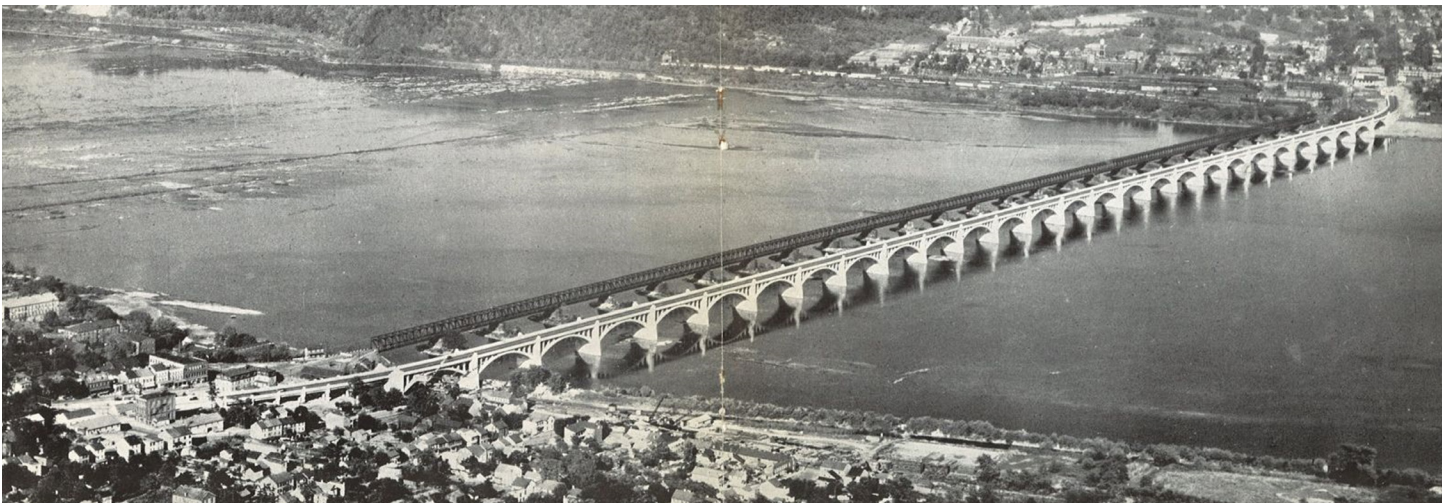
## FIFTH BRIDGE (1930 TO PRESENT) VETERANS MEMORIAL BRIDGE

Construction of the Columbia-Wrightsville Bridge in 1929–1930 created the longest multi-span concrete arch bridge in the world at the time. It has 27 river piers and 22 approach piers, spanning a total of 1.26 miles. Contractors finished this bridge 140 days ahead of schedule. Their contract gave a \$400 bonus for every day the project was finished ahead of schedule. When it was opened vehicular traffic on the fourth bridge stopped. Tolls were charged to cross until 1943, when construction debt was paid off.

## SIXTH BRIDGE (1972 TO PRESENT) WRIGHT'S FERRY BRIDGE

Route 30 first ran through Wrightsville and Columbia across the Veterans Memorial Bridge but was diverted to this bridge. Construction was completed in 1972. It is 87 feet wide and over 5,600 feet long. In 1975, it was officially named the Wright's Ferry Bridge.

Check out more about the Bridges over the Susquehanna and other river history at [www.SusquehannaHeritage.org](http://www.SusquehannaHeritage.org) under River History Menu.



# MANAGING STORMWATER

## Did you know that Columbia Borough has a stormwater management program?

Stormwater is water that originates from rain, including snow and ice melt. Stormwater can soak into the soil, be stored on the land surface in ponds and puddles, evaporate, or runoff. The stormwater runoff seeps into the ground or flows into inlets and catch basins which eventually drain into the storm sewer drainage systems. During this process, the stormwater runoff picks up dirt, chemicals, and other pollutants that travel through a storm sewer drainage system or grass swales that find their way to streams then the Susquehanna River and ultimately the Chesapeake Bay. Unfortunately, most stormwater runoff, whether on grass, bare ground, stone or pavement, is conveyed to nearby streams, rivers, or other water bodies without treatment to remove the dirt, chemicals, and other pollutants. The untreated stormwater runoff is considered illicit discharge.

Federal, state and local regulations define “illicit discharge” to the storm sewer system as a discharge which is not composed entirely of stormwater. Illicit discharge often originates from homes, car washes, restaurants, gas stations, and industrial and commercial facilities. Examples include discharges of gray water (laundry) from homes, commercial carwash wastewater, fleet washing, commercial laundry wastewater, and floor washing to shop drains. “Non-polluting” source such as ground water, non-contact cooling water are not considered illicit discharge.

Did you know that municipalities must comply with Municipal Separate Storm Sewer System (MS4) requirements? An MS4 is defined as “a conveyance or system of conveyances (including roads with drainage systems, municipal streets, catch basins, curbs, gutters, ditches, man-made channels, or storm drains)” that is (1) designed or used for collecting or conveying stormwater and (2) is owned or operated by a city, county, or other governmental entity (including federal and state entities). MS4 permits authorize cities,

counties, or other governmental entities to discharge stormwater collected by their storm sewer systems to waters of the United States. One of the reporting requirements for the MS4 permit requires the Borough to inspect its stormwater conveyance systems for illicit discharge. The Borough depends on citizens to report illicit discharge to or from the Borough’s stormwater system. The detection and elimination of illicit discharges is important to protect and restore waterways and is crucial to the overall health of our environment/community. In the bigger picture, the control of illicit discharge is to protect the earth and all the inhabitants that depend on a healthy water supply. In our community, the river is a source of enjoyment and nourishment for us, our neighbors, and our wildlife friends. We see the effects of pollutants in the river every day. It is important that we, as a community, take illicit discharge very seriously. Residents need to be active participants in the solution. Do your part, be stormwater smart!

Here are some ways residents can help to keep our stormwater runoff clean:

- Keep grass clippings out of the street
- Avoid over fertilizing your yard
- Clean up pet waste
- Plant trees and shrubs
- Install rain barrels and allow for slow release of stored water
- Reduce mowing by planting lush leafy plants instead of grass
- Reduce chemical use and dispose of containers properly
- Reduce hard impervious areas such



## SHADE TREES

Trees are essential to the wellbeing of any community. Here in Columbia we have a Shade Tree Commission that consist of residents; Amy Evans, Amanda Hawn, Shawn Shuffelbottom, John Gamby, and Julie Lehmer. The commission meets monthly on the last Monday of the month, 6:00 PM, at the Borough Office.

Shade from trees helps to slow water evaporation from dry lawns. Trees reduce runoff into storm drains (which lead to our river) by allowing rainfall to run down the tree and into the ground instead. Trees absorb odors and pollutant gasses and filter the air by trapping particulates on leaves and bark. They also provide oxygen. On hillsides or stream slopes, trees slow runoff and hold soil in place.

Plus, they are beautiful. Trees are proven to make people happier, muffle sound from nearby streets and freeways, and mask unsightly views. The beauty of well-planted property and its surrounding street and neighborhood can raise property values by as much as 15 percent.

as paved driveways or sidewalks

- Plant native trees shrubs and perennials
- Report any discharge from stormwater outfalls during dry weather (a sign that here could be a problem with storm water system).
- Know where your sump pump is discharging water from your basement. Ensure it is within your yard, preferably a grassed area.
- Ensure your downspouts are flowing clear.



# SPOTTED LANTERNFLY

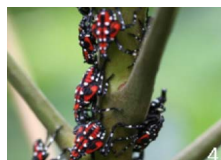
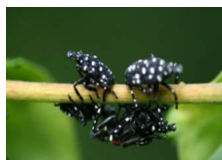
Over the winter, there wasn't much talk about the Spotted Lanternfly, but now that we are into the summer season, the nuisance is about the rear its ugly head again. Unlike us, the Spotted Lanternfly is not under a "stay at home" order.

The Spotted Lanternfly is an invasive planthopper. It was first discovered in Pennsylvania in Berks County and has spread to other counties in the southeast portion of the Commonwealth. This insect has the potential to greatly impact agricultural crops such as grapes, hops, and hardwoods. It is also reducing the quality of life for people living in heavily infested areas.

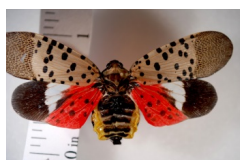
There is one generation of Spotted Lanternflies per year. Spotted Lanternflies live through the winter only as eggs. Adults lay eggs in masses in the late fall on trees, under bark, posts, lawn furniture, cars, trailers, outdoor grills, and on many other surfaces. The eggs are protected with a mud-like covering. The eggs hatch in the spring. Egg masses containing 30–50 eggs. Spotted Lanternflies go through five stages of growth after hatching from eggs. The first four stages are called nymphs. The young nymphs are black with bright white spots and are roughly the size of a pencil eraser. The next stages of growth are similar, but the nymphs become larger. The fourth stage of Spotted Lanternflies is vibrantly red with distinct patches of black and bright white spots. The adult Spotted Lanternfly is a leafhopper with wings about 1" long. Adults have grey wings with black spots. When the Spotted Lanternfly opens its wings, it reveals a bright red underwing.

**If you find any of these life stages of the Spotted Lanternfly, remove, devitalize, place in a sealed bag, and dispose of bag in the garbage.**

*Spotted Lanternfly nymphs, present in spring and summer months. (Images from Park et al. 2009)*



*Adult Spotted Lanternfly, present in autumn months.*



Residents can help reduce the population of the invasive pest by managing their property for signs of the Spotted Lanternfly. Walk around and check for egg masses on trees, cement blocks/walls, outdoor equipment/furniture, rocks, and any other hard surface. If egg masses are found on your property, scrape them off using a plastic card or putty knife. Scrape them into a bag or container with rubbing alcohol and keep them in this solution permanently. Remember to look up as eggs can be laid on the tops of trees and may not be easily seen and reached.

One type of trap for the capture of the hatched Spotted Lanternfly is tree banding. Tree banding is when the tree trunk is wrapped in sticky tape. Tape can be purchased online or from a garden store. When nymphs first hatch, they will walk up the tree and get caught on the tape. Securing wire or fencing material to cage the tape will keep birds and animals from getting caught on the tape. For a complete overview of tree banding and other trapping tips go to the following link: <https://extension.psu.edu/using-traps-for-spotted-lanternfly-management>

The public can also help by keeping an eye out for egg masses, while they are on the trail. You do not have to stay 6 feet away from the Spotted Lanternfly! Remember, the trail extends across several municipalities and trail users can really make a difference in Spotted Lanternfly management. Keep an eye out and be prepared to destroy them. For more information, visit the Penn State Extension Office website at the following link: <https://extension.psu.edu/spotted-lanternfly>

## CHECKLIST FOR RESIDENTS LIVING IN SPOTTED LANTERNFLY QUARANTINE AREAS

*IMPORTANT: Before you move outdoor items from the quarantine area, check for spotted lanternfly egg masses, adults, and nymphs. Make sure all items are pest free before you move them. Help keep this pest from spreading.*

### CHECK BEFORE YOU MOVE:

#### Recreational or Camping Items

- |  |  |
|--|--|
| <input type="checkbox"/> Backpacks             | <input type="checkbox"/> Motor homes           |
| <input type="checkbox"/> Basketball backboards | <input type="checkbox"/> Recreational vehicles |
| <input type="checkbox"/> Bicycles              | <input type="checkbox"/> Snowmobiles           |
| <input type="checkbox"/> Boats/Boat trailers   | <input type="checkbox"/> Tarps                 |
| <input type="checkbox"/> Campers               | <input type="checkbox"/> Tents                 |
| <input type="checkbox"/> Ice chests            | <input type="checkbox"/> Other                 |
| <input type="checkbox"/> Motorcycles           |  |

#### Outdoor Household Items

- |  |   |
|--|---|
| <input type="checkbox"/> Barrels                   | <input type="checkbox"/> Refrigerators/Freezers         |
| <input type="checkbox"/> Cardboard or wooden boxes | <input type="checkbox"/> Storage sheds                  |
| <input type="checkbox"/> Outdoor poles             | <input type="checkbox"/> Shutters                       |
| <input type="checkbox"/> Plant containers          | <input type="checkbox"/> Storm/Screen doors and windows |
| <input type="checkbox"/> Firewood                  | <input type="checkbox"/> Window awnings                 |
| <input type="checkbox"/> Propane or oil tanks      | <input type="checkbox"/> Outdoor furniture              |
| <input type="checkbox"/> Trash cans                | <input type="checkbox"/> Other                          |

#### Building Materials

- |   |  |
|---|--|
| <input type="checkbox"/> Bricks/Cinder blocks | <input type="checkbox"/> Tools and toolboxes |
| <input type="checkbox"/> Cement mixing tubs   | <input type="checkbox"/> Workbenches         |
| <input type="checkbox"/> Lumber               | <input type="checkbox"/> Skidsters/Forklifts |
| <input type="checkbox"/> Roofing materials    | <input type="checkbox"/> Pipes               |
|   | <input type="checkbox"/> Other               |

#### Yard and Garden Items

- |   |   |
|---|---|
| <input type="checkbox"/> Dog houses, rabbit sheds, chicken coops, etc | <input type="checkbox"/> Backhoes                 |
| <input type="checkbox"/> Barbecue grills                              | <input type="checkbox"/> Lawnmowers               |
| <input type="checkbox"/> Carts  | <input type="checkbox"/> Signs and posts          |
| <input type="checkbox"/> Cold frames                                  | <input type="checkbox"/> Storage sheds            |
| <input type="checkbox"/> Fencing                                      | <input type="checkbox"/> Tractors and trailers    |
| <input type="checkbox"/> Garden tillers                               | <input type="checkbox"/> Trees, shrubs and plants |
| <input type="checkbox"/> Yard decorations                             | <input type="checkbox"/> Other                    |
| <input type="checkbox"/> Garden tools                                 |   |

#### Children's Playthings

- |   |                                    |
|---|------------------------------------|
| <input type="checkbox"/> Play houses        | <input type="checkbox"/> Sandboxes |
| <input type="checkbox"/> Kiddie pools       | <input type="checkbox"/> Other     |
| <input type="checkbox"/> Bicycles, scooters |                                    |

## BOROUGH OF COLUMBIA

308 LOCUST ST  
COLUMBIA, PA 17512  
717.684.2467

PRSRT STD  
U.S. POSTAGE  
PAID  
LANCASTER, PA  
PERMIT NO. 334

COLUMBIAPA.NET

## COMMUNITY INFORMATION

Visit The Borough Website Or Follow Us On Facebook For Announcements And Updates On Meetings, Community Events, And Celebrations.

### BOROUGH HOLIDAY SCHEDULE (Borough Offices Closed)

- |                        |                     |   |
|------------------------|---------------------|---|
| • 5/25 Memorial Day    | • 9/7 Labor Day     | *Remember, when a holiday falls on a      |
| • 7/4 Independence Day | • 11/3 Election Day | Monday, yard waste pick-up is on Tuesday. |

## BOROUGH MONTHLY MEETINGS

### 1ST TUESDAY

- Borough Council Work Session, 7:00 PM

### 1ST WEDNESDAY

- Land Bank, 5:00 PM

### 2ND TUESDAY

- Civil Service Commission 1:00 PM
- Borough Council Regular Meeting, 7:00 PM

### 2ND WEDNESDAY

- Board of Review and Appeals 7:00 PM

### 3RD TUESDAY

- Planning Commission Work Session, 6:00 PM
- Planning Commission, 7:00 PM

### 3RD WEDNESDAY

- HARB, 7:00 PM

### 4TH MONDAY

- Shade Tree Commission, 6:00 PM

### 4TH TUESDAY

- Borough Council Regular Meeting, 7:00 PM

### LAST WEDNESDAY

- Zoning Hearing Board, 7:00 PM

MEETINGS HELD IN BOROUGH  
COUNCIL CHAMBERS

## BOROUGH OFFICIALS

### LEO LUTZ

*Mayor*

### HEATHER ZINK

*Council President*

### SHARON LINTNER

*Council Vice President*

### TODD BURGARD

*Councilperson*

### FRAN FITZGERALD

*Councilperson*

### ERIC KAUFFMAN

*Councilperson*

### HOWARD STEVENS

*Councilperson*

### PAMELA WILLIAMS

*Councilperson*

### MARK E. STIVERS

*Borough Manager*

### KYLE WATTS

*Finance Manager*

### JAKE GRAHAM

*Highway Department Manager*

### PAUL PAULSEN

*Codes Compliance Manager*

### JACK BROMMER

*Chief of Police*

### DOUGLAS KEMMERLY

*Fire Chief*

### JAY BARNINGER

*Emergency Management Coordinator*

### CONTACT INFO

COLUMBIA BOROUGH OFFICE  
717.684.2467



Do you need to schedule your free tax preparation appointment OR need help with rent or mortgage payments?  
Call 2-1-1 today!

