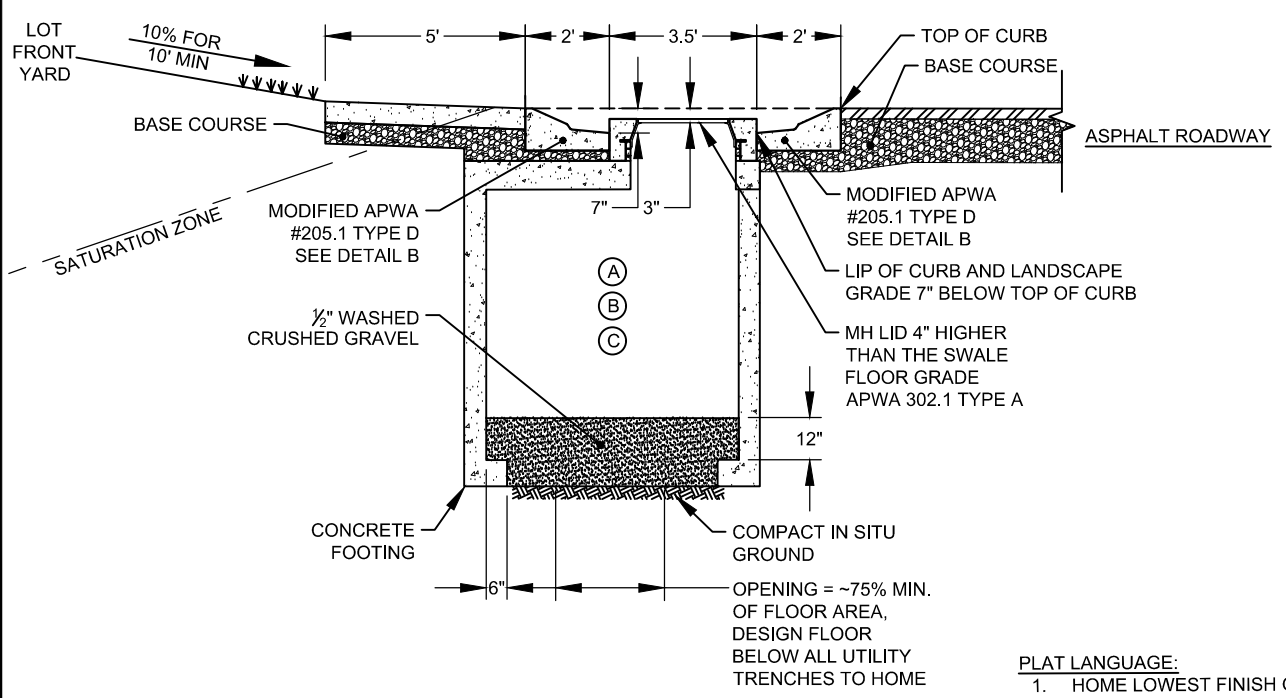


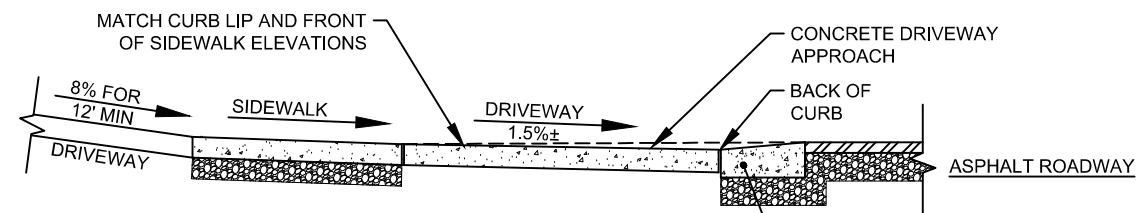
PLAN
NO SCALE



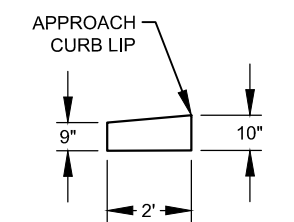
SECTION A-A'
NO SCALE

DRYWELL KEYED NOTES:
(A) FLOOD CONTROL VOLUMES: DRYWELL + RETENTION SWALE VOLUME IN OPEN MAINTAINABLE SPACE REQUIRED. PERCOLATION CALCULATIONS NOT ALLOWED.
(B) CITY MAY CONSIDER DEVELOPER CHOICE TO WIDEN SWALE, RIGHT-OF-WAY, AND SHIFT SETBACKS TO REDUCE DRYWELL SIZE AT DEVELOPER COST.
(C) SEPERATE RETENTION/FLOOD CONTROL VOLUME REQUIRES CITY APPROVAL

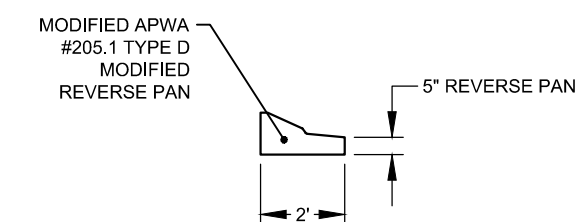
- PLAT LANGUAGE:**
- HOME LOWEST FINISH GRADE OPENING TO BE, TOP BACK OF SIDEWALK + 12" MINIMUM. INCLUDING BUT NOT LIMITED TO, TOP OF WINDOW WELL, DOOR, GARAGE, ETC.
 - SET HOUSE FOUNDATION ABOVE SATURATION ZONE PER GEOTECH REPORT.
 - FRONTING RESIDENT IS RESPONSIBLE TO MAINTAIN LANDSCAPING AND GRADE OF ENTIRE 3.5' WIDE LANDSCAPE STRIP INCLUDING BUT NOT LIMITED TO: MAINTAINING 7" DEPTH FROM TOP OF CURB TO LANDSCAPE STRIP. REMOVAL OF TRASH, LOOSE VEGETATION AND DEBRIS.
 - LANDSCAPING MATERIAL MUST BE PERVIOUS AND NOT FLOAT. DENSE VEGETATION IS RECOMMENDED, TO IMPROVE INFILTRATION, NO TREES ARE PERMITTED.



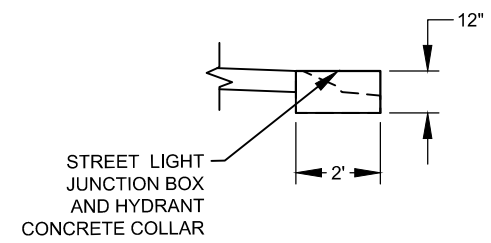
SECTION B-B'
NO SCALE



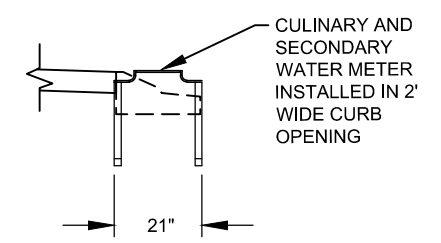
DETAIL A
NO SCALE



DETAIL B
NO SCALE



DETAIL C
NO SCALE



DETAIL D
NO SCALE

DATE	NOV 2020	DATE	NOV 2020
CHECK TB		CHECK TB	
DESIGN TB	SWF	APPRV.D.	
		TITLE	
		DATE	

REVISIONS			
BY			
DATE			
#			

LOW IMPACT DEVELOPMENT 1
URBAN SWALE DRYWELL

RIVERTON CITY
ENGINEERING DIVISION
12526 S. 4150 W.
RIVERTON, UTAH 84096
801-208-3162



PROJECT #
SHEET #
LID 1